

The background of the entire page is a photograph of an offshore wind farm. Several white wind turbines with three blades each are mounted on yellow steel structures in the middle of a blue sea. The sky is a clear, light blue. A large, semi-transparent watermark is overlaid on the image. The watermark consists of a circular emblem containing a stylized gear and a lightning bolt, with the text 'JD POWER PROJECTS CONTRACTING INC.' around the top edge and 'CONNECTING POWER' at the bottom.

COMPANY PROFILE
EXTRA HIGH VOLTAGE
CABLE INSTALLATION SPECIALIST
ONSHORE AND OFFSHORE

Issue 2025

TABLE OF

CONTENTS

2	ABOUT US
3	VISION & MISSION
4	COMPANY TIMELINE
5	ORGANIZATIONAL CHART
9	LICENSES
13	LOCATION & CONTACT
14	SPECIALIZED AREAS OF BUSINESS
16	OUR SERVICES
19	MANPOWER DEVELOPMENT & TRAINING
25	QUALITY COMMITMENT
28	SAFETY COMMITMENT
31	EQUIPMENT AND TOOL LIST
52	PROJECT REFERENCE LIST



ABOUT

US



JD Power Projects Contracting Inc. specializes in turnkey electrical solutions, focusing on Extra High Voltage (EHV) cable systems. Operating across Asia-Pacific, the Middle East, Africa, and Europe, we deliver reliable and innovative power transmission services.

Our expertise includes:

- **Offshore Cable Termination & Repair-** Handling submarine cables up to 500 kV for oil rigs and wind farms.
- **XLPE Turnkey Projects-** Onshore installation, splicing, and termination of XLPE cables up to 500 kV and oil-filled paper cables up to 170 kV.
- **Overhead Transmission Lines-** Erection and stringing for efficient power distribution.
- **Cable & GIS Testing-** Ensuring reliability in power cables and Gas-Insulated Switchgear (GIS).

Committed to quality, innovation, and safety, we are a trusted global partner in power transmission. Headquartered in Lucban, Quezon, Philippines, with offices in Dubai and Riyadh, our expert team ensures excellence in every project.

**TO BE THE BEST IN THE CONSTRUCTION INDUSTRY
ACROSS THE GLOBE IN PROVIDING WORLD CLASS
TURNKEY SOLUTIONS TO OUR CLIENTS BY:**

VISION

To become the leading provider of world-class turnkey solutions in the construction industry across the Asia-Pacific region by delivering world-class turnkey solutions, empowering communities, and connecting power across the region with innovation and excellence.

Our mission is to excel in the construction industry through careful planning, sound management, exceeding client expectations, and ensuring continuous training and safe worksites for our people.

MISSION

COMPANY TIMELINE

2012 - 2013

Established in Saudi Arabia to supply fiber optic accessories for SEC, the company later expanded into high-voltage cable accessory installations (up to 132 kV) and partnered with global brands like Pfisterer, Taihan, Brugg, NKT, ZTT, Changlan, Südkabel, and Tyco.



2015

Entered Indonesia with 150 kV installations for PLN in Palembang, expanded projects to Bogor and Surabaya with partners like GE and Pfisterer, and extended regional operations to Bangladesh, Malaysia, Sri Lanka, and Taiwan.



2018

JD Power ventured into Africa, winning multiple projects in Morocco, including the Western Sahara, Berkane, Nador, and Saidia regions.



2019

Appointed as the exclusive commercial agent for Pfisterer in the Philippines, the company established its Philippine office as the new headquarters, with the Saudi office becoming a satellite branch.

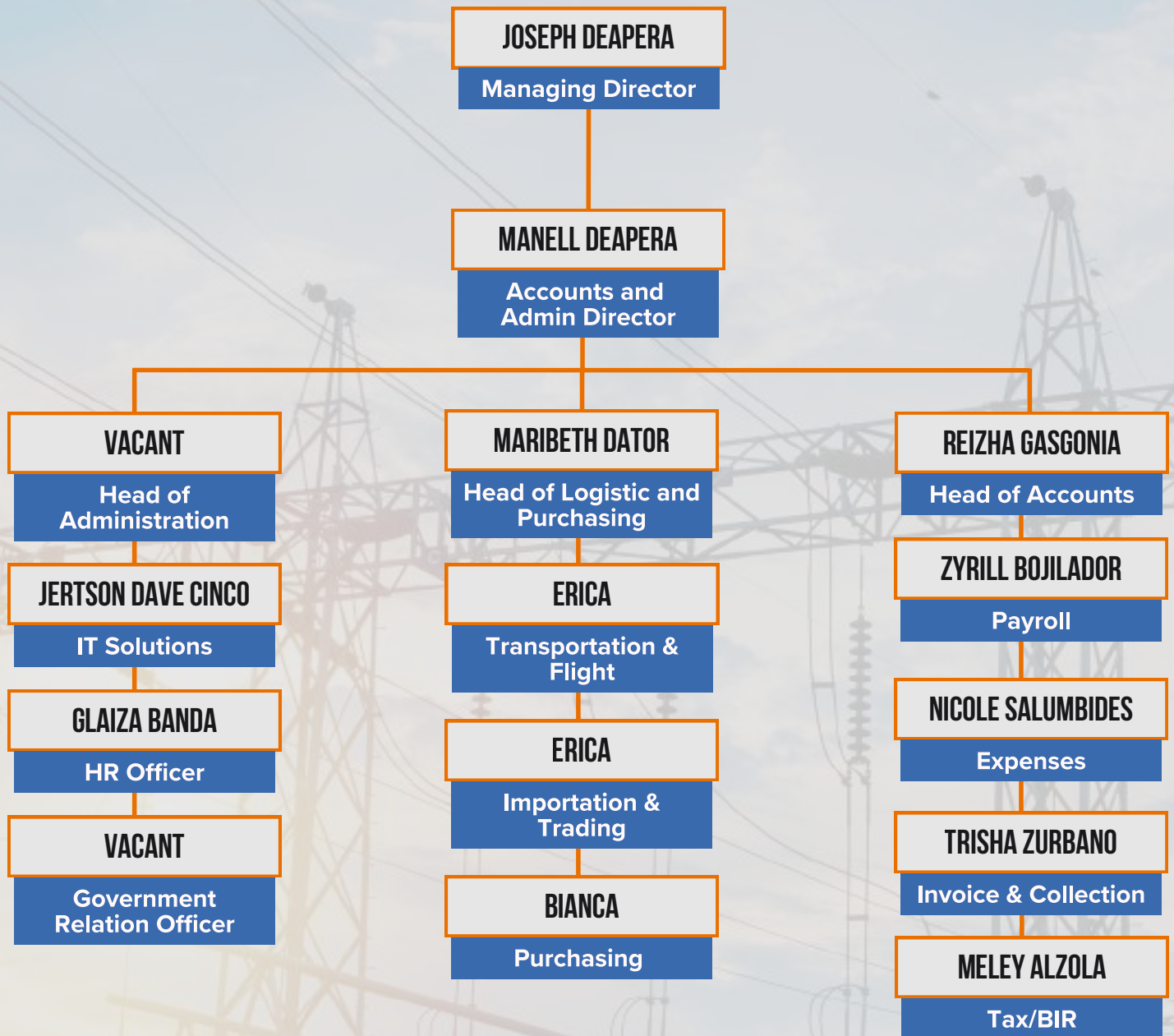


2022 - 2023

Partnered with ID Technic for cable clamps, opened a Dubai office to support UAE projects, and entered the offshore oil & gas sector with specialized installation services.

ORGANIZATIONAL CHART

PHILIPPINES



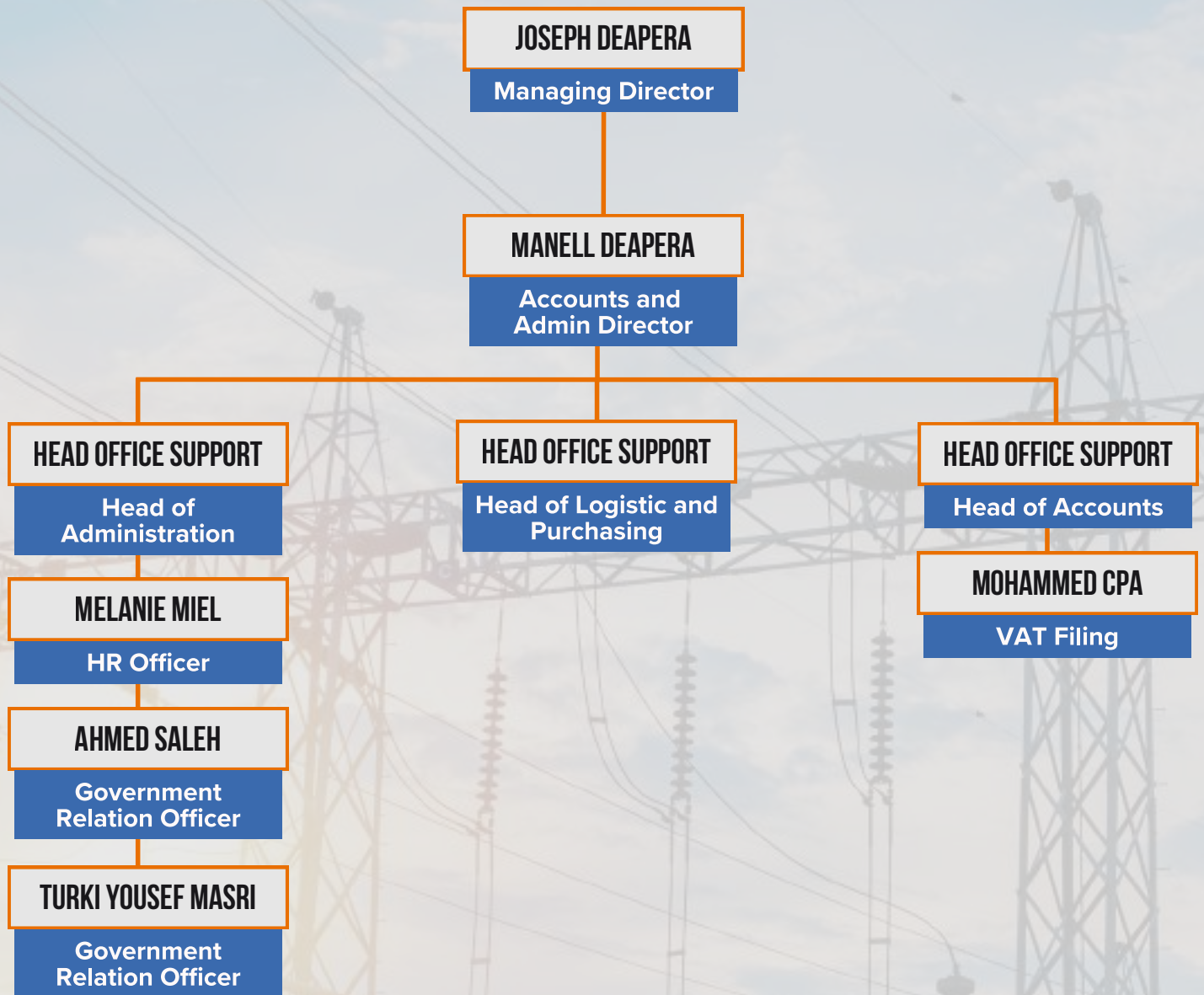
ORGANIZATIONAL CHART

PHILIPPINES



ORGANIZATIONAL CHART

MIDDLE EAST



ORGANIZATIONAL CHART

MIDDLE EAST



LICENSES

PHILIPPINE OFFICE LICENSES

Securities and Exchange Commission Registration



PCAB License



BIR 2303

2303
REGISTRATION CERTIFICATE

CONFIRMATION OF REGISTRATION

TYPE OF BUSINESS	NAME OF LICENSEE	DATE OF REGISTRATION	EXPIRES ON
SECURITIES AND EXCHANGE COMMISSION (SEC)	JD POWER PROJECTS CONTRACTING, INCORPORATED	2023-01-01	2025-12-31

2303
REGISTRATION CERTIFICATE

CONFIRMATION OF REGISTRATION

TYPE OF BUSINESS	NAME OF LICENSEE	DATE OF REGISTRATION	EXPIRES ON
PROFESSIONAL CONTRACTORS BOARD (PCAB)	JD POWER PROJECTS CONTRACTING, INCORPORATED	2023-01-01	2025-12-31

LICENSES

PHILIPPINE OFFICE LICENSES

Mayor's Permit



TAX Clearance



Bureau of Customs Certificate of Registration



LICENSES

SAUDI ARABIA LICENSES

Commercial Registration



Chamber of Commerce



GOSI Certificate



LICENSES

SAUDI ARABIA LICENSES

Zakat Certificate



Saudization Certificate





VAT Registration Certificate

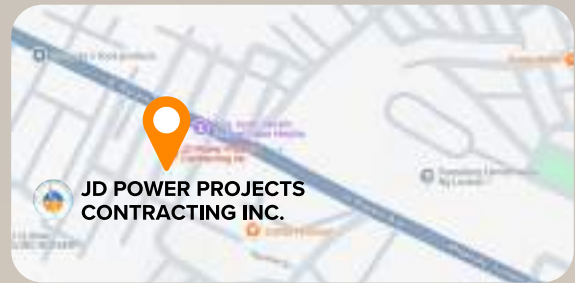


OUR LOCATION & CONTACT

HEAD OFFICE:


 JD Power Projects Contracting Inc.
172 Asuncion St. Fabie Heights Subd.
Lucban, Quezon Philippines 4328

 +63 917 622 7681/ +63 921 447 6459





JEDDAH OFFICE:

 Bab Al Mandab St. Bldg. 2846, Ground
Floor R2, 'Al Hamra District, PO Box
3939 Jeddah 23212
Kingdom of Saudi Arabia

 +966 55 588 5949


UAE DUBAI OFFICE:


 Dubai Silicon Oasis, DDP, Building A1
United Arab Emirates


 +63 921 447 6459



RIYADH OFFICE:

 Room No 11, Building No 8008, Iyad
Ibn Hanif, Al Malaz, 2411. Riyadh 12831
Kingdom of Saudi Arabia

 info@powerproj.com

 www.powerproj.com

SPECIALIZED AREAS OF BUSINESS

We focus on your specific needs, providing the targeted solutions and expertise to meet the unique needs of this industry. Our specialization ensures quality service and effective results.

01



OFFSHORE INSTALLATION

Setting up equipment or structures for energy, communication, or industrial purposes.

02



FIBER OPTIC AND EXTRA HIGH VOLTAGE CABLE WORKS (UP TO 500KV)

Reliable, high-performance systems.

03



TURNKEY CIVIL CONSTRUCTION

Complete end-to-end civil construction solutions delivered ready for operation.

04



ENGINEERING DESIGN AND CONSTRUCTION

Integrated engineering design and construction services for efficient and durable infrastructure.

05



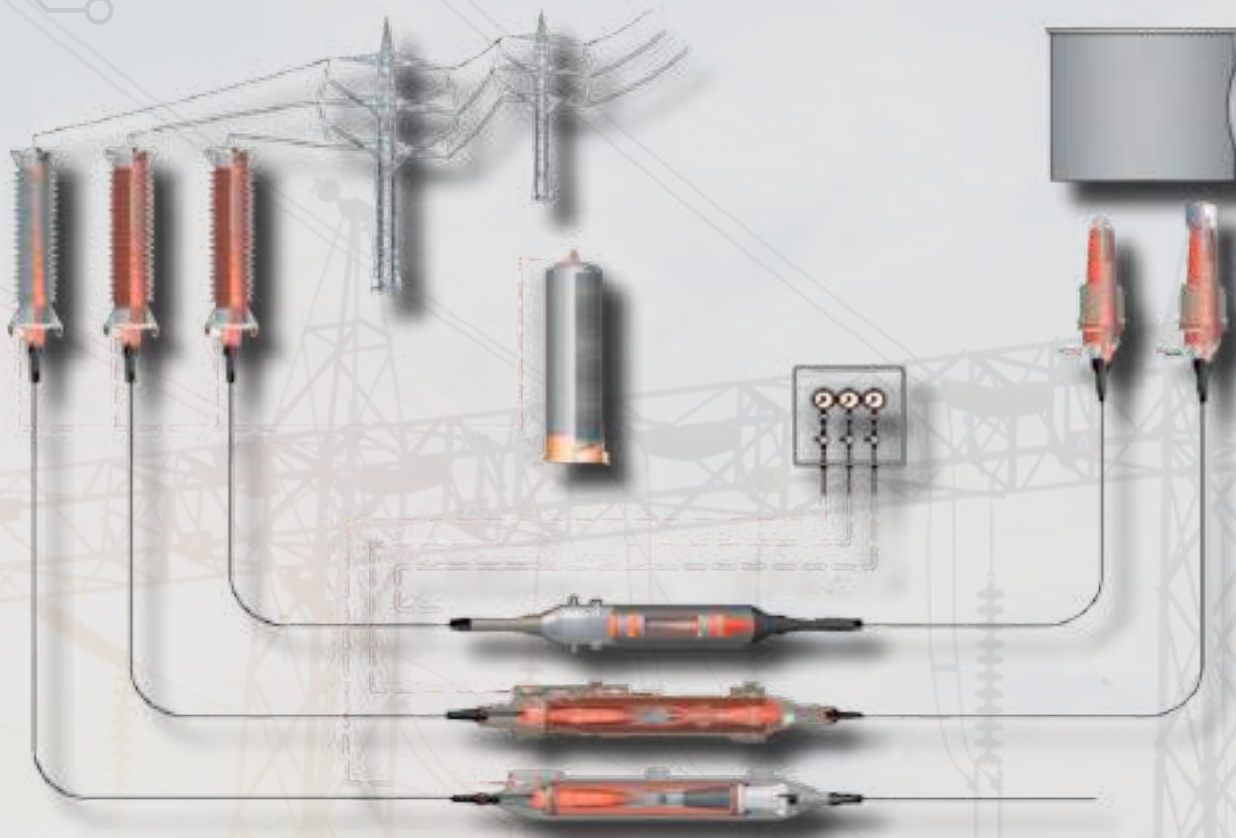
ELECTRICAL PRODUCT TRADING

Trading and supply of high-quality electrical products for industrial, commercial, and infrastructure project

SPECIALIZED AREAS OF BUSINESS

CONTRACTOR OF UNDERGROUND POWER CABLES AND SUBSTATION

CABLE JOINTING, TERMINATION AND TESTING UP TO 245KV



TOTAL SOLUTION FOR UNDERGROUND CABLING SYSTEM UP TO 500kV

- ✓ Medium to Extra High Voltage Cable Jointing and Termination up to 500kV
- ✓ High Voltage Cable Testing and Commissioning
- ✓ Low to Extra High Voltage Cable Supply Trading
- ✓ Medium to Extra High Voltage Cable Accessories Trading
- ✓ Cable Trenching and Cable Pulling
- ✓ Cable Fault Location, Repair and Testing
- ✓ Fiber Optic Cable and Accessories Trading
- ✓ Fiber Optic Cable Splicing / Fiber Optic Cable Testing and Commissioning
- ✓ Civil Works and Engineering Services

OUR SERVICES

OFFSHORE INSTALLATION SERVICES



We provide specialized offshore cable installation for oil and gas platforms, offshore wind farm export systems, and inter-island energy links.



OUR SERVICES



UNDERGROUND CABLES AND TRANSMISSION LINES

This division delivers comprehensive, end-to-end engineering solutions for the installation of underground power cable networks, supporting voltages up to 400kV. We cater to utility companies, contractors, and infrastructure developers, ensuring reliable, high-performance underground power transmission systems.

- Value Management
- Design Engineering
- Supply of Cable & Accessories
- Cable Pulling
- High Voltage Cable Jointing & Termination
- Fiber Optic Cable Splicing & Management, Rack Installation and Test
- Commissioning of Underground Power Cables

EXTRA HIGH VOLTAGE TESTING AND TELECOM

Our specialized team performs advanced diagnostic and acceptance testing on EHV cables and associated telecom components, ensuring safety, reliability, and compliance:

- Low Voltage High Pot Testing (VLF Test)
- Extra High Voltage Cable Electrical Testing
- Extra High Voltage AC Resonance High Pot Testing
- Cable Fault Locations
- Telecommunication Cable Integration



OUR SERVICES

MV-EHV CABLE AND ACCESSORIES TRADING

Our MV-EHV Cable and Accessories Trading Division specializes in the supply and distribution of a comprehensive range of high-quality electrical products and solutions, catering to medium and extra-high voltage underground system projects.

Product Portfolio Includes:

- Medium to Extra High Voltage Cables
- Power Cable Joints and Terminations
- Fiber Optic Cable
- Link Boxes
- Cable Accessories



CIVIL CONSTRUCTIONS

JD Power Projects Contracting Inc. has a dedicated cable division specializing in civil works, including cable trenching, backfilling, cable pulling, installation of cable tiles, asphaltting, pipe laying, joint bay construction, Horizontal Directional Drilling (HDD), road crossing for cables, entry duct bank construction, and cable tray installation.

In addition, our company actively participates and serves as a general contractor for various infrastructure projects. These include the following:

- Construction of drainage canals
- Improvement of multi-purpose halls, new municipal buildings, and rural health units
- Development and enhancement of river and flood control structures, grouted riprapping
- Philippine Government Projects



MANPOWER DEVELOPMENT & TRAINING



- ESS/P Composite/Porcelain Outdoor Termination up to 245kV
- Connex 6-6s Dry Plug-in Termination up to 245 kV
- MSA One Piece Silicone Slip Joint up to 245kV
- ESS/ESP Silicone/Porcelain Outdoor Termination up to 245kV
- ESG/ESU GIS/Transformer Termination up to 170kV
- Connex 5s/6/6s Dry Plug-in Termination 145kV to 245kV
- ESF Flexible Silicone Termination 123kV

MANPOWER DEVELOPMENT & TRAINING



230kV XLPE CABLE ACCESSORIES

- Installation of Straight Joint and Insulated Joint (Pre-molded)
- Installation of Outdoor Termination
- Installation of GIS Sealing End

MANPOWER DEVELOPMENT & TRAINING



- EHV CABLE ACCESSORY ASSEMBLY UP TO 150kV XLPE
- PMJ - Pre-Molded Joint
- Outdoor Termination (Sealing End)/ SO Type
- GIS Termination (Sealing End)/ SO Type

MANPOWER DEVELOPMENT & TRAINING

NKT



- Outdoor Termination Dry Type up to 145kV
- Cross bonding kit for XLPE insulated cables with copper screen wires
- (SKKB up to 170kV)
- Switch Gear/Transformer dry type up to 145kV (KSEV/KTEV) size 1,4,6
- Outdoor Oil Filled Termination, with porcelain or composite insulator
- up to 170kV (FEV-P/V)
- Outdoor Dry Type Termination up to 145kV (THV 72-145)

MANPOWER DEVELOPMENT & TRAINING

Raychem



- Heat Shrinkable Cable Termination 72kV
- Heat Shrinkable Cable Termination 13.8kV

MANPOWER DEVELOPMENT & TRAINING

BRUGG



- MPCP Joint Training
- Field Repair - Outdorr Sheath End (ODSE) Training

QUALITY COMMITMENT

At JD Power Projects Contracting Inc., we are committed to delivering services that consistently meet and exceed the highest standards of quality and reliability, aligned with the safety, functional, and performance expectations of our clients and stakeholders.

Our strategic objective is to sustain and strengthen our leadership position in the construction and allied industries by providing superior quality services that reflect our dedication to operational excellence and customer satisfaction.

To fulfill this commitment, we have established and maintain an effective and efficient Quality Management System (QMS) that complies with applicable international standards and is tailored to meet client-specific requirements. This system is subject to regular monitoring, evaluation, and continuous improvement to ensure ongoing effectiveness and relevance.

Each department within our organization operates under clearly defined quality objectives, which are both measurable and achievable. These objectives are systematically reviewed throughout the year as part of our performance management and strategic planning processes.

We are dedicated to ensuring that this Quality Policy is communicated, understood, implemented, and maintained at all levels of the organization. It is reviewed at planned intervals to ensure its continued suitability in line with evolving business needs and market expectations.

Furthermore, JD Power Projects Contracting Inc. strictly complies with all applicable health, safety, and regulatory requirements. We foster a culture of accountability and leadership by example, recognizing that quality begins at the top and permeates through every level of our operations.

This policy underpins our corporate values and serves as the foundation for building long-term partnerships based on trust, performance, and excellence.

QUALITY COMMITMENT

KEY FUNCTION - QUALITY MANAGEMENT

JD Power Projects Contracting Inc. develops comprehensive Quality Assurance and Quality Control (QA/QC) Plans and Procedures tailored to the specific requirements and scope of each project. The company also prepares detailed Method Statements and Inspection & Test Plans (ITPs) aligned with the technical specifications and nature of each activity.

The company conducts regular training sessions and collaborative orientations for key personnel and clients, ensuring alignment and effective implementation of project-specific quality standards and procedures.

The company has established comprehensive procedures for document control, calibration of inspection tools and equipment, third-party inspections, consumable management, material and equipment traceability, proper handling, testing, and audit processes. Internal audits are also conducted, often in the presence of client representatives, to ensure transparency and compliance with project standards.

The company implements a streamlined communication system designed to ensure effective information dissemination, real-time project status updates, personnel monitoring, and timely customer responsiveness. This approach guarantees that all project activities progress efficiently, maintain accuracy, and are comprehensively documented and accountable.

Stage-wise quality control and inspections are conducted in accordance with the Inspection and Test Plan (ITP), with thorough recording of objective evidence and meticulous documentation of all site activities, aligned with project and client requirements.

JD Power Projects Contracting Inc. maintains a competent supply chain management system that meets all essential logistical requirements for each operation.

Furthermore, the company continuously strives to enhance its Total Quality Management (TQM) system to improve the quality of customer service and deliverables.

QUALITY COMMITMENT

QMS ELEMENTS

Quality System - Documented Policies & Procedures

Management Responsibilities

Contract Review

Document Control

Procurement Control (including Supplier Control)

Identification, Control of Items Processes Inspection

Control of Measuring and Test Equipment Inspection

Test and Operating Status

Control of Non-conforming Items Corrective Action

Preventive Measures

Handling, Storage and Shipping

Quality Assurance Records Internal Audits

Training and Personnel Qualifications Statistical

Techniques

Client orientation and consultative seminars

Stream line Communication System

Competent Supply Chain Management

SAFETY COMMITMENT

JD Power Projects Contracting Inc. is firmly committed to upholding the highest standards of health, safety, and environmental performance across all facets of its operations. As a fundamental component of our business strategy, the integration of occupational health and safety practices is essential to the achievement of our corporate objectives and to the protection of our personnel, assets, and the environment.

The Company, through the leadership of its duly designated Safety Officers and supervisory personnel, implements a proactive and systematic approach to safety management. This approach ensures that health and safety are embedded in our operational processes and are regarded as a shared responsibility across all levels of the organization.

JD Power Projects Contracting Inc. shall exert all reasonable efforts to prevent accidents, eliminate potential hazards, and minimize occupational risks. The Company recognizes the critical role of the Project Management Team and on-site Safety Personnel in the implementation, monitoring, and continuous improvement of safety measures. Compliance with all applicable national laws, regulations, industry standards, and client requirements is mandatory at all times.

Our Safety Officers are mandated to maintain a safe and healthy work environment through regular inspections, risk assessments, and the timely submission of safety reports to management. The safety program is continually evaluated and updated to address emerging risks and ensure alignment with current best practices.

Furthermore, the Company adopts administrative safety protocols in accordance with both statutory requirements and client-specific standards. Regular safety drills, orientations, and capacity-building activities are conducted to strengthen the safety competencies of our workforce. Safe work procedures and proper handling of tools and equipment are emphasized as foundational elements of our operational excellence.

All personnel are expected to fully comply with the Company's safety policies and procedures. JD Power Projects Contracting Inc. affirms that safety is not only a regulatory and operational priority but a moral and ethical obligation. Management and employees alike are jointly accountable in fostering a culture of safety and in upholding our commitment to zero harm to people, property, and the environment.

SAFETY MANAGEMENT

First Aid:

- First Aider
- First Aid Center with male nurse available during Normal Working Hours.
- First Aid available out of Working Hours and First Aid Kits in Site and Offices.
- Emergency Response Team.

Training:

- Safety Officer
- Safety Induction for all new Employees prior to start their job.
- Excavation Safety / Power Tools.
- Heat Stress Management & Incident Reporting.
- Confined Space Training.
- Site Emergency Evacuation Plan during Working at Height.

Risk Management:

- Identification of Hazards: EHS inspections, Assessment of Risk: Qualitative.
- Risk Control measures: Job Safety Analysis and training.
- Recovery: Emergency Evacuation, Medical & First aid facilities, Spill/ Leaks (in case of environmental issue), evacuation drills training.

Camp Health & Hygiene Management :

- Fully Furnished accommodation.
- Fully furnished Kitchen, Dinning Hall with Drinking water facilities
- Wash/Bath Room with hot and cold water and washing facilities
- Proper Arrangement for food & cold storage.
- 24 Hours Emergency Arrangement

Emergency Response Plan:

- Alarm Systems
- Muster Points
- Evacuation Routes
- Roles and Responsibilities
- Transportation
- Communications

EQUIPMENT LIST

CABLE JOINTING & TERMINATIONS

Equipments/Tools	Model / MFG	Description	Qty.
Hack Saw	MFG: Aulong		6
Heating Mat	MFG: NKT	NKT GmbH Type	6
Crimper		4 High Voltage 5 Low Voltage	9
Hammer	List of MFG: <ul style="list-style-type: none"> • Makita • Eagle • Stanley 	3 Hammer 1 Chipping Hammer 1 Steel Hammer 3 Rubber Hammer 1 Long Hammer 2 Ball Hammer	11
Plier	List of MFG: <ul style="list-style-type: none"> • Hausman • KIT International F.Z.E. 	3 Combination Pliers 1 Diagonal Pliers 6 Long Nose	10
Blower	List of MFG: <ul style="list-style-type: none"> • Makita (M4000) • Stanley 		3
Cable Sheet Cutter			2
Screwdriver	List of MFG: <ul style="list-style-type: none"> • Lotus • Bengo 		10

EQUIPMENT LIST

CABLE JOINTING & TERMINATIONS

Equipments/Tools	Model / MFG	Description	Qty.
Steel Brush			3
Socket Wrench		2 set 6 individual parts	8
Glass Cutter	MFG: Stanley		2
File	MFG: Tolsen	5 round 4 flat 2 triangles 1 square	12
Sling Belt	MFG: Ponsa	10 violet (3m) 10 green (3m) 8 yellow (3m) 8 yellow (5m) 16 old sling belt (assorted size)	52
Ratchet Belt		8 orange (0.5m) 6 old ratchet belt (6m)	14
Cable Stand	MFG: Fabricated		3
Alcohol	MFG: Top Glam		21
Profile	MFG: Fabricated	11 pcs. of 1 meter 6 pcs. of 2 meters	17

EQUIPMENT LIST

CABLE JOINTING & TERMINATIONS

Equipments/Tools	Model / MFG	Description	Qty.
Peeling Tool	List of Model: <ul style="list-style-type: none"> Unicut 40 Unicut 30 MFG: Pfisterer	Stripping tool Unicut 40, insulation -φ 70-125mm with feeding jaws 60mm, peeling knife 6°, cutting knife, angle; p 20°, removing knife short, removing knife long square key with inside hexagonal	4
Allen Key			7
Cable Extension	Available Model: WEU_105_PK Available MFG: OMNI	Extensions Sizes: 2 White (50m) Black (5m, 15m, 2 - 20m, 25m, 30m) Others are assorted sizes	17
Pipe Cutter	List of MFG: <ul style="list-style-type: none"> Wadfow Danmi 		5
Puller	Model: Ridgid	1 Heavy Duty Puller 2 Small Puller	3

EQUIPMENT LIST

CABLE PULLING

Equipment	Model / MFG	Specification	Qty.
Straight Cable Roller	Model: 350 of STR1105 - Heavy Duty MFG: Fabricated	<ul style="list-style-type: none"> Steel tubing frame spray painting Aluminum Roller $\phi 140 \times 200 \text{mm}$ (diameter x width) Weight 4kg 	1050
Corner Roller	Model: TCR 2204 MFG: Ontides Export	<ul style="list-style-type: none"> Steel tubing frame spray painting Aluminum Roller $\phi 140 \times 200 \text{mm}$ (diameter x width) Weight 3.5kg Load: 10KN 	50
Bell-type Roller	Model: BMR 1700 MFG: Ontides Export	170mm duct	10
V-type Roller	MFG: Fabricated	<ul style="list-style-type: none"> height 350mm width 500mm length 1000M weight 17kg 	15
Pulling Machine (Winch)	Model: 90328100	Winch Machine 10 ton	1
Cable Pushing Machine	MFG: KT International F.Z.E.		3
Master Control Box	MFG: KIT International F.Z.E.	5/10 sets cable pulling machines are matched with one master control box. Master control box is controlling the subcontrol box	2
Shackle			3
Swivel Clamp		Swivel Clamp 48.6X	150

EQUIPMENT LIST

CABLE PULLING

Equipment	Model / MFG	Specification	Qty.
Subcontrol Box	MFG: KIT International F.Z.E.	1 cablepulling machine is matched with one subcontrol box. Each Subcontrol box control cable feeder to push pull cable at the same time. Besides, if the electric engine is too hot,subcontrol box will be tripped off.	5
Spool with Lifting Cable			
Fish Wire			1
Mandrel Cleaner	MFG: Ontides Export		1
Hydraulic Cable drum Jack Trestle	Model: • 4121201 • PJK 9112	Reel Stand (pair) - 12 tons	2
Hydraulic Cable drum Jack Trestle (Reel Stand) 30 tons	MFG: Changshzu Zhongtai	<ul style="list-style-type: none"> • Base: 2.3x2m (LxW) • Hydarulic Bottle Jcak 30T + 30T (two sides) • Round Bar:121 mm x 5700 mm (dia x L) 	2
Generator Set	Model: PHW 100E-DST MFG: Powerhouse	Powerhouse Diesel Generator	2
Cable Push Pulling Machine	Model: DSJ 180	<ul style="list-style-type: none"> • Line pulling:6KN • Pulling Speed(m/min):6 • Clamping force:≤2.7KN • Electric motor:1.1KW×2,380V 50-60Hz • Oversize dimension(mm):980X500X440 • Weight(KGS):180 • Cable diameter:25-180 mm 	5

EQUIPMENT LIST

TESTING SERVICES

MFG	Model	Description	SN.	Qty.
Huazheng	HXB-3780KVA270KVA	Series Resonant Withstand Test set		1
Huazheng	HZDP-80KV	VLF Hipot Tester	HZ25202020322-02	1
Kilovolt	KPG 54kV VLF	VLF Testing, Dc Testing		1
Kilovolt	KPG 24kV VLF	VLF Testing, Dc Testing		1
Megger	MIT1025	Insulation Resistance Tester	101457966	1
Baur	SSG 1000	Sheath Test and Fault Locator Baur		1

EQUIPMENT LIST

TESTING SERVICES

MFG	Model	Description	SN.	Qty.
OMICRON	CPC 100	Coupling Unit for Line & Ground Testong	LN342S/102504062	1
OMICRON	CP CUI	Coupling Unit for Line & Ground Testong	MN355A/102522363	1
Fluke	9040	Phase Rotation Indicator	62050189WS	1
Fluke	9040	Phase Rotation Indicator	62540526WS	1
AVO	DCM300E	Digital Earth Leakage Clamp Meter	6111-284	1
Megger	1025-UK	10kV Insulation Tester	1.00194E+15	1
Fluke	87V	True RMS Multimeter	60130148	1
Fluke	80K-6	High Volt Probe	6721018	1
Megger	DET4TC2	Digital Earth Tester	102589754	1
Megger	TDR2000/3	Time Domain Reflectometer	102599673	1
Megger	DLRO10HD	Digital Low Resistance Ohm Meter		1
Megger	DLRO200-EN	Ducter Ohmmeter		1
HIGHVOLT	WRV 83/260 T	AC resonant test system		1

EQUIPMENT LIST

VEHICLES AND HEAVY EQUIPMENT

Company Vehicle List			
Vehicle	Description	Plate Number	Qty.
Yamaha Mio	Series: MIO I125 BB37 Body Type: Motorcycle Vehicle Type: Motorcycle W/O Side Car Year Model: 2020 Gross Wt. 92kg Net Capacity: 70kg	923DJW	1
Isuzu Elf Truck	Series: NMR85 H TILT Body Type: Dropside Vehicle Type: Utility Vehicle Year Model: 2020 Gross Wt: 4.490 tons Net Capacity: 2.245 tons	NGDB3033	1
Isuzu Flexi Truck	Series: QKR77 NON-TILT Body Type: Passenger Van Vehicle Type: Utility Vehicle Year Model: 2021 Gross Wt: 4 tons Net Capacity: 2 tons	DAV4764	1
Toyota Hilux Conquest	Series: HILUX 2.4 CONQUEST 4x2 A/T Body Type: Pick-Up Vehicle Type: Utility Vehicle Year Model: 2024 Gross Wt: 2.810 tons Net Capacity: 2.085 tons	DBM8255	1

EQUIPMENT LIST

VEHICLES AND HEAVY EQUIPMENT

Company Vehicle List			
Vehicle	Description	Plate Number	Qty.
Toyota Tamaraw FX	Series: HILUX TAMARAW 2.4 FX DSL M/T Body Type: Utility Passenger Vehicle Type: Utility Vehicle Year Model: 2025 Gross Wt. 2.790 tons Net Capacity: N/A	DBU5191	1
Kawasaki Barako (Bartolina)	Series: BC175J Body Type: MTC Vehicle Type: Motorcyle with side car Year Model: 2021 Gross Wt. 289 kg Net Capacity: 210 kg	597OKU	1
Toyota Hilux	Series: HILUX 2.4 CONQUEST 4x2 Body Type: Pick-Up Vehicle Type: Utility Vehicle Year Model: 2019 Gross Wt: 2.835 tons Net Capacity: 1.417 tons	NBQ8398	1
Toyota Fortuner	Series: FORTUNER 2.4L 4 Body Type: SUV Vehicle Type: Utility Vehicle Year Model: 2018 Gross Wt: 2.605 tons Net Capacity: 1.302 tons	NBK7119	1

EQUIPMENT LIST

VEHICLES AND HEAVY EQUIPMENT

Company Vehicle List			
Vehicle	Description	Plate Number	Qty.
Yamaha Mio	Series: MIO I125 BB37 Body Type: Motorcycle Vehicle Type: Motorcycle W/O Side Car Year Model: 2020 Gross Wt. 92kg Net Capacity: 70kg	420DJE	1
Isuzu Boom Truck	Series: FVM34 T VD01 EURO IV Body Type: Truck Boom Truck Vehicle Type: Truck / Bus Year Model: 2025 Gross Wt.: 26 tons Net Capacity: 13 tons	CCP2988	1
Toyota Hilux	Series: HILUX 2.4 J 4x2 M/T - MA-010 Body Type: Pick-Up Vehicle Type: Utility Vehicle Year Model: 2026 Gross Wt.: 2.860 tons Net Capacity: N/A	Newly Acquired	1
Heli Brandnew Counterbalanced Forklift	Series: CpC038 - Q17K2 1220 mm Fork Blade 4m LH Dual Mast with sideshift Net Capacity: 3.8 tons	SN: 010383J1407	1

EXTRA HIGH VOLTAGE TOOLS SET

Equipments/Tools	Model	Description Part No.	Qty.
Cable Cutter	AEG		1
Portable Band Saw	Makita	2107FK/220	1
Reciprocating Saw - Cable Cutter	Makita		6
Sanding Machine	FLEX	LRP1503VRA	3
Combine Stripping Tool Unicut 40	Pfisterer		1
Hexagonal Compression Die 1200mm ² Original	Pfisterer		1
Hexagonal Compression Die 1200mm ² Original	Al-Arifi		1
Block and Tackle	Pfisterer		2
Heating Mats	Pfisterer		6
Hand Mixer		X06 230MK160/14	1
Cone for Pfisterer Body Insertion for 1200mm ² Cable Size	Pfisterer		4
Cone for Pfisterer Body Insertion for 2000mm ² Cable Size	Pfisterer		4
Pfisterer Compression Tool for Termination Connecting Bolt and Link Box terminals	Pfisterer	EHP	1

EXTRA HIGH VOLTAGE TOOLS SET

Equipments/Tools	Model	Description Part No.	Qty.
Cable Supports	Fabricated		30
Cable Supports	Fabricated		30
Cable Profile 1200mm ²	Fabricated		12
Cable Profile 2000mm ²	Fabricated		6
Flexible Cable 16mm ² (20 meters)	Fabricated		3
Ratchet Belt			24
Canvass Cloth			4
Airconditioned - AKAI 2 Tons	AKAI	WN24CI-Akai	2
Plain Trolley 2 Tons	KC-P	Single Pin Type	4
Pipe Cutter (100mm - 168mm)	Ridgid		1
Chain Block (1 Ton Capacity, 3 Meters Lifting Height)	Vital		12
Angle Grinder (for PP Housing)	Makita		1
Strapping Machine			1
Open Wrench Set			1
Open Wrench Set (Double Open 6-22mm)		6-22mm CRV Germany	1

EXTRA HIGH VOLTAGE TOOLS SET

Equipments/Tools	Model	Description Part No.	Qty.
Wrenches (18" Adjustable)	IREGA	18" IREGA Forced Steel	1
Torque Wrench	SYKESUK	½" 30-150 pounds	1
Filter Wrench Belt			1
Cable Hoist	Ridgid	Model 581 1000 pounds	2
Allen Socket	Koken	½" Drive 8mm	1
Allen Key Set	Stonec	1.5mm - 12mm	1
Wood Chisel	Stanley	32mm	2
Wood Chisel	Stanley	38mm	2
Wood Chisel	Stanley	12mm Nylon Handle	2
Round Steel Chisel	Stanley	12" Chisel	1
Ratchet Handle			1
Metal Tool Box		510 x 210 x 245	1
Steel Curve Pruning Saw		12" Pruning Saw	1
Flat Tip Screwdriver		¾ x 10"	2
Hammer Type ScrewDriver	Hero	12" Hammer Type	2
Plastic Case, Compound Bucket			1

EXTRA HIGH VOLTAGE TOOLS SET

Equipments/Tools	Model	Description Part No.	Qty.
Rubber Mallet Hammer	Proto	2" with Fiber Glass Handle	1
Claw Hammer	Bullocks	16oz Steel	2
Heating Torch		350x45 Made in Italy	1
Heating Torch			1
Heating Gun	Bosch		1
Gas Cylinder		Newly Procured	2
Nylon Belt		2 Ply with Standard Eye	3
Bench Vice Clamp			1

EXTRA HIGH VOLTAGE TESTING MACHINERY

Equipments/Tools	Model	Description Part No.	Qty.
Medium Voltage Cable Tester	HIPOTRONICS 100HVTB	Input: 115 VAC 25A 60Hz or 220 VAC 15A 60Hz Output: 100 kV 50 mA = 5 kVA or 50 kV at 100 mA = 5 kVA	1
DC Hipot Tester	BAUR PGK25	25 kV, with mains and battery power (12 V), supports external 12 VDC Compact for insulation testing	1
Graphical Insulation Resistance Tester	Megger 5kV	5 mA high power testing Auto test, graphical display, result storage	1
Surge Voltage Generator	BAUR SSG1500 (1536 Joule)	Cable fault location via surge energy at 8, 16, 32 kV (adjustable from 0 to 100%)	1
Audio Frequency Receiver	BAUR UL7	For route tracing and depth evaluation of electric lines and cables	1
Ground Microphone	BAUR BM30	Works with surge generator for pinpointing cable faults via sound	1
Digital Low Resistance Ohmmeter (DLRO)	Megger	0.1 $\mu\Omega$ resolution, max 2 k Ω , 10 A Includes Instruction Manual and Calibration Certificate	1

EXTRA HIGH VOLTAGE TESTING MACHINERY

Equipments/Tools	Model	Description Part No.	Qty.
Variable Current Transformer (Primary Injection)	REO (Turkey)	3 Phase Injection, 230/380 V, 50/60 Hz, 200 A Phase to Earth Detection	1
Electric Power Meter Analyzer	Megger	Measures: Power Factor, Voltage, Current Calculates: Sequence Resistance and Reactance	1
Phase Rotation Indicator	Fluke 9040		
Digital Earth Leakage Clamp Meter	AVO DCM300E		
True RMS Multimeter	Fluke 87V		
High Voltage Probe	Fluke 80K-6		

FIBER OPTIC TESTING MACHINERY

Equipments/Tools	Model	Description Part No.	Qty.
Power Meter 850/1300 nm LED source (62.5/125µm)	EXFO	Inclusions: <ul style="list-style-type: none"> • Rechargeable battery (GP-1001) • AC adapter/charger and field carrying case (GP-10-067) • Instruction manual • Certificate of Calibration (Hard Copy) • Shoulder strap • Connector adapter ST/PC 	1
FTB-1,Modular Mainframe Unit	EXFO	Inclusions: <ul style="list-style-type: none"> • 7" color touchscreen TFT display • USB 2.0 interfaces • Up to 1 Gig RJ-45 built-in interface • Fiber Inspection Probe video connector interface OTDR Advanced Software: <ul style="list-style-type: none"> • Fault Finder, Bi-Directional analysis • Template mode, Summary screen • Macrobend detection & LinearView Accessories: <ul style="list-style-type: none"> • AC adapter/charger and 1 battery • Certificate of Compliance • Semi-rigid case (GP-10-072) • Neckstrap & Handstrap 	1
MM OTDR Module, 850/1300nm, 27/26 dB (50/125 & 62.5/125µm)	EXFO FTB-720-12CD-XX	850/1300 nm, 27/26 dB	1

FIBER OPTIC TESTING MACHINERY

Equipments/Tools	Model	Description Part No.	Qty.
Power Meter	EXFO FPM-602-XX (Ge Detector)	Inclusions: <ul style="list-style-type: none"> • Rechargeable battery (GP-1001) • AC adapter/charger and field carrying case (GP-10-060) • Instruction manual • Certificate of Calibration • Shoulder strap • Connector adapter FOA-XX** • USB cable (GP-2008) 	1
Patchcord SX		ST/UPC - ST/UPC, MM 62.5/125, 3m	3
Sumitomo Fusion Splicer Kit (with Dual Heaters)	Sumitomo T-71C	Inclusions: <ul style="list-style-type: none"> • 1× T-71C Fusion Splicer (dual heaters, touchscreen display) • 1× Power Cord • 1× Power Supply Module • 1× Cooling Tray • 1× Hand Strap • 1× Spare Electrodes (pair) • 1× Operation CD Manual • 1× Quick Reference Guide • 1× Carrying Case/Table • 1× Li-ion Battery (2250 mAh) • 1× Jacket Remover • 1× Cleaver (auto-rotating blade) 	3

FIBER OPTIC TESTING MACHINERY

Equipments/Tools	Model	Description Part No.	Qty.
Fiber Cleaver	Sumitomo FC 6RS-C	Fiber optic cleaver with auto-rotating blade	1
Tool Kit / Optical Cable Preparation Kit	Sumitomo OFTK02	Inclusions: <ul style="list-style-type: none"> • 1× Slotted Screwdriver 75×3.2mm • 1× Pozi Screwdriver 75mm×No.1 • 1× 3m or 10ft Measuring Tape • 1× Fibre Stripper 10A • 1× Junior Hacksaw • 1× Precision Screwdriver Set (7 pcs) • 1× Kevlar Scissors • 1× Screwdriver 100×6mm • 1× Retractable Knife • 1× BT1A Stripper RG174 RG187 • 1× Cable Ringing Tool • 1× Plastic Parts Box • 1× 40z IPA Dispenser • 1× Pozi Screwdriver 60mm×No.0 • 1× Foam Tool Case • 1× 125mm Straight Tweezer • 1× Lint Free Wipes • 1× Blue NoNik Stripper 150–200 • 1× Combination Plier 160mm (6") • 1× 5" Side Cutter • 100× Protection Sleeve (SPS612.6N) • 100× Protection Sleeve (SPS402.6N) 	2

FIBER OPTIC TESTING MACHINERY

Equipments/Tools	Model	Description Part No.	Qty.
Patchcord SX	Prysmian	ST/PC- ST/PC, MM50/125, 3m	1
Patchcord SX	Prysmian	FC/PC- FC/PC, MM50/125, 3m	2
Patchcord SX	Prysmian	ST/PC-FC/PC, MM50/125, 3m	1
Patchcord SX	Prysmian	ST/PC-ST/PC, MM62.5/125,3m	1
Patchcord SX	Prysmian	FC/PC-FC/PC, MM62.5/125,3m	2
Patchcord SX	Prysmian	ST/PC-FC/PC, MM62.5/125,3m	3
Pigtail	Prysmian	FC/PC MM50/125, 5m	2
Pigtail	Prysmian	FC/PC MM62.5/125, 5m	2
Cam Splice Mechanical Splices	Corning	6 per pack	1
Cam Splice Tool Kit	Corning		1
Fiber Optic Cable Stripper			1

FIBER OPTIC TESTING MACHINERY

Equipments/Tools	Model	Description Part No.	Qty.
FTB2 Test Kit Base Mainframe	FTB2	<p>Modular mainframe with 2slot capacity Windows Embedded 8 Standard OS Dual Core CPU Touchscreen color display, 1280 × 800 TFT, 256 mm (10.1 in) RAM: 2 GB internal memory Interfaces:</p> <ul style="list-style-type: none"> • RJ45 LAN 10/100/1000 Mbit/s • 2× USB 2.0 ports • 1× USB 3.0 port • Display port • 3.5 mm audio jack (speaker and mic) 	1
EXFO OTDR Module	FTB7300E234BX X	<p>Wavelengths: 1310, 1550, 1625 nm Dynamic Range: 39, 37, 37 dB (9/125 μm)</p>	1
EXFO Power Meter Light Source	FLS600234BLXX	<p>Wavelengths: 1310, 1550, 1625 nm Single port laser source (9/125 μm)</p>	1
Cable Slitter	Ripley RCS114	Cable slitter for diameters 4.5 mm to 29 mm	1

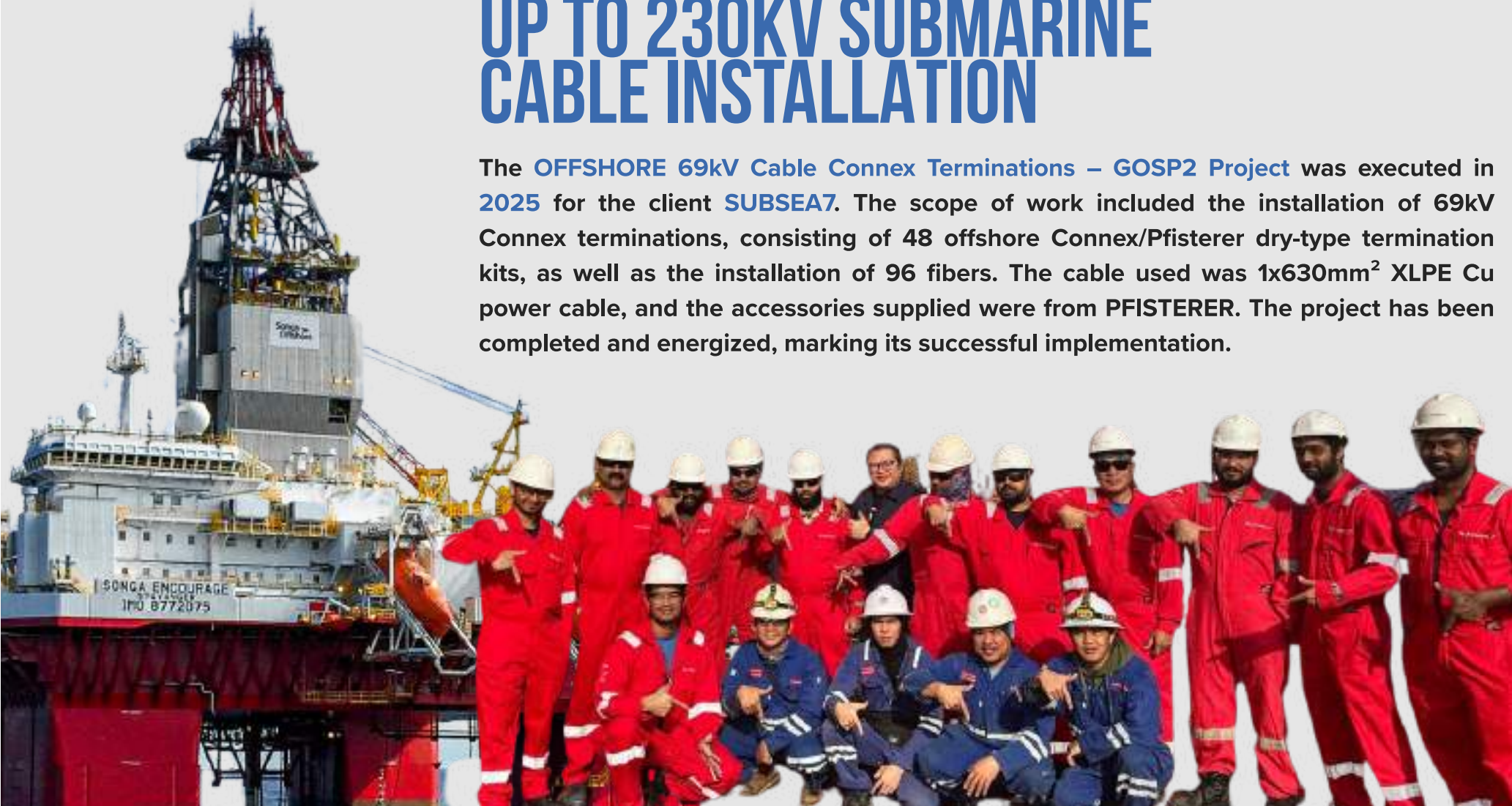
HEAVY TESTING MACHINERY AND VEHICLE LIST

Equipments/Tools	Model	Description Part No.	Qty.
Coupling Unit for Line & Ground Testing	OMICRON CPC 100		
Coupling Unit for Line & Ground Testing	OMICRON CP CU1		
10 kV Insulation Tester	Megger 1025-UK		
Surge Voltage Generator (Cable Testing)	BAUR 1500		
Toyota Fortuner 4x2 model 2011	Toyota Fortuner		2
Toyota Van for FOC Jointing at Site	Toyota Van		1

OFFSHORE PROJECTS

UP TO 230KV SUBMARINE CABLE INSTALLATION

The **OFFSHORE 69kV Cable Connex Terminations – GOSP2 Project** was executed in **2025** for the client **SUBSEA7**. The scope of work included the installation of 69kV Connex terminations, consisting of 48 offshore Connex/Pfisterer dry-type termination kits, as well as the installation of 96 fibers. The cable used was 1x630mm² XLPE Cu power cable, and the accessories supplied were from PFISTERER. The project has been completed and energized, marking its successful implementation.



OFFSHORE PROJECTS

PROJECT REFERENCE LIST

LOCATION	END USER/ CLIENT NAME	YEAR	PROJECT NAME & SCOPE OF WORK
United Arab Emirates	ZTT, Zhongtian Technology Co., Ltd	2024	<p>OFFSHORE 230kV Zuluf Project</p> <p>Installation of 33 offshore Pfisterer Connex dry terminations, 3 offshore repair joints using Pfisterer casings by ZTT, and 6 onshore outdoor 230kV cable terminations. The cable used is 1×630mm², and all cable accessories are manufactured by PFISTERER</p>
Saudi Arabia	SUBSEA7	2024	<p>OFFSHORE 69kV Cable Repair Joints GOSP2 Project</p> <p>Installation of three 69kV repair joints, the installation of 96 fiber optic cables, and AC resonance testing of a 20 km route. The cable used is 1×630mm², with all cable accessories supplied by PFISTERER</p>
Saudi Arabia	MC DERMOTT & RIYAD CABLES	2023	<p>OFFSHORE 230kV and 69kV MARJAN Project</p> <p>Installation of 24 units of 69kV Connex size 4/55 terminations, suitable for 1×800mm² XLPE copper power cables, and 60 units of 230kV Connex size 6/5 terminations, suitable for 1×630mm² XLPE copper power cables. All cable accessories are supplied by PFISTERER</p>

TESTING COMMISSIONING

CONSTRUCTION OF D/C 380KV OHTL FROM BUHAIRA TO TABUK

The Line Parameter Test for a 380 kV Double Circuit Overhead Transmission Line (approx. 78 km, single conductor) for the client Larsen & Toubro Saudi Arabia includes Phasing and Insulation Tests, a Phase Sequence Check, and Continuity Test. It also involves Line Impedance Measurement for positive, negative, and zero sequences. Additionally, Phase-to-Phase substance measurements are performed to ensure electrical integrity and compliance with specifications.



TESTING COMMISSIONING

PROJECT REFERENCE LIST

LOCATION	CLIENT NAME	YEAR	PROJECT NAME & SCOPE OF WORK
Saudi Arabia	Tran Ji Trading and Contracting Company L.L.C		<p>Al Shuaibah 1 PV Project Rabigh</p> <p>Testing of 20 circuits of 110kV overhead transmission lines includes phase sequence, impedance and mutual impedance, tower foot resistance, continuity, insulation resistance, aircraft warning light (if applicable), and HiVolt withstand testing for one 110kV AIS bay with circuit breaker voltage injection.</p>
Saudi Arabia	Larsen and Toubro Saudi Arabia		<p>69kV Shedgum GOSP-1 & Aindar GOSP-3 TG</p> <p>Electrical and High Voltage Testing includes resonance testing of 69 kV cables (route length <1 km, no joint) and Hi-Pot (24 kV DC) testing of 5 circuits of 4.16 kV 1x3C-240/300 sq.mm cables</p>
Saudi Arabia	VOLTECH MOHAWAREAN ENGINEERING CONTRACTORS		<p>Development of 91MWac/108.7MWp Solor PV Plant Layla Town Riyadh</p> <p>132kV UG Cable testing of 4 circuits</p>
Saudi Arabia	Larsen and Toubro Saudi Arabia		<p>CN# 4400015488 Construction of One (1) D/C OHTL LILO between New Afif BSP #9081 and 9006 / 9037 BSP.</p> <p>Electrical, high voltage, and partial discharge testing were performed on four 132kV XLPE cable circuits (500m), along with line parameter tests on 132kV (3km) and 380kV (178km) double-circuit OHTLs, and electrical testing of 12 circuits of 132kV surge arresters, all in accordance with SEC requirements</p>

LOCATION	END USER/ CLIENT NAME	YEAR	PROJECT NAME & SCOPE OF WORK
Saudi Arabia	Star Vanguard Equipment Maintenance Co-General Electric		<p align="center">230kV Jafurah GCP1 SS</p> <p>HiVolt withstand test for 230 kV GIS SS Voltage Injection with 22 Injections maxi</p>
Saudi Arabia	Larsen and Toubro Saudi Arabia		<p align="center">1.4 GWac Al KHF PV Independent Power Plant</p> <p>Line parameter testing for 6 circuits of 132 kV D/C OHTL (single conductor) included phasing, insulation, phase sequence, continuity, impedance (positive, negative, zero), and phase-to-phase substance measurements</p>
Saudi Arabia	Larsen and Toubro Saudi Arabia		<p align="center">2 GWac AR RASS 2 PV Independent Power Plan</p> <p>Line parameter testing for 10 circuits of 132 kV D/C OHTL (single conductor) included phasing, insulation, phase sequence, continuity, impedance (positive, negative, zero), and phase-to-phase substance measurements</p>
Saudi Arabia	Larsen and Toubro Saudi Arabia		<p align="center">CN# 4400016910 Construction of 380/132/33kV Hail BSP# 9070</p> <p>Electrical, High Voltage, and PD Testing was conducted on 2 circuits of 132 kV XLPE power cables (RL: 500 m) as per SEC requirements. HiVolt withstand testing and voltage injection (3-phase RYB) for PD and CB testing were also performed on 2 circuits of 380 kV GIS SS 9039 (1 dia expansion/1 feeder up to cable head)</p>
Saudi Arabia	Larsen and Toubro Saudi Arabia		<p align="center">2.0Gw Al-Muwayh Solar PV Plant</p> <p>Line parameter test was conducted on all 10 circuits of the 380kV overhead transmission line, including phasing, insulation, phase sequence, continuity, impedance, and phase-to-phase substance measurements.</p>

LOCATION	END USER/ CLIENT NAME	YEAR	PROJECT NAME & SCOPE OF WORK
Saudi Arabia	RIYADH CABLES GROUP OF COMPANY		<p align="center">230kV UG Cable Test Berri Gas Plant</p> <p>Electrical High Voltage & PD Testing of 230kV XLPE Power Cables Circuit as per SEC Requirements with RL: 250 meters</p>
Saudi Arabia	Larsen and Toubro Saudi Arabia		<p align="center">1.5Gw Al-Khushaybi Solar PV Plant</p> <p>Line parameter tests were completed on all 8 circuits of the 380kV overhead transmission line, covering phasing, insulation, phase sequence, continuity, line impedance (positive, negative, and zero sequence), and phase-to-phase substance measurements.</p>
Saudi Arabia	SAMA ENERGY		<p align="center">CN#4400018377 Reinforcement Interconnection for Reliability os SS-9029 & 9010, in Qassim</p> <p>Line parameter tests were successfully conducted on both circuits of the 132 kV double-circuit overhead transmission line (single conductor), including phasing, insulation, phase sequence, continuity, line impedance (positive, negative, and zero sequence), and phase-to-phase substance measurements.</p>
Saudi Arabia	AL SALEH AND AL MOSSOUD CONT. CO. (LTD)		<p align="center">CN#4400013329 Integration of Renewable Energy Power Plant Madinah</p> <p>Electrical High Voltage & PD Testing of 110kV XLPE Power Cables Circuit as per SEC Requirements with RL: 1.4 kMtrs</p>

EXTRA HIGH VOLTAGE CABLE WORKS PHILIPPINES



EXTRA HIGH VOLTAGE

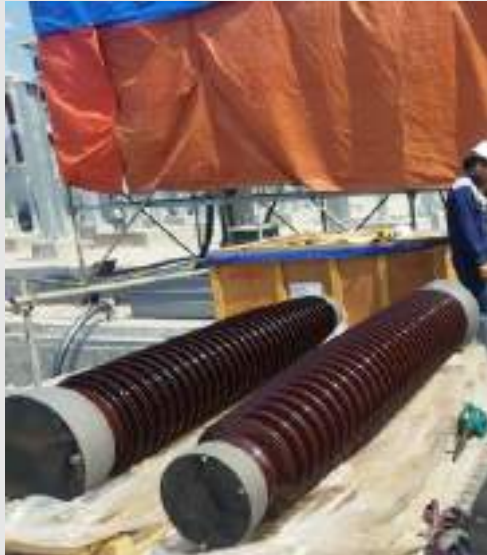


PROJECT REFERENCE LIST

Project Name:
230kV UNDERGROUND POWER CABLE RESTORATION – CBK KALAYAAN POWER PLANT

Year	2023
Client	CBK / Harmonics Engineering
Scope of Work	Cable Pulling of 230kV XLPE Power Cable

EXTRA HIGH VOLTAGE

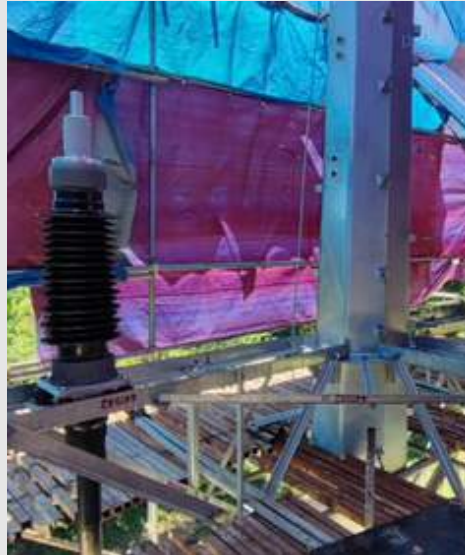


PROJECT REFERENCE LIST

Project Name:
230kV Santa Cruz Solar Energy Inc. (SCSEI)

Year	2023
Client	AC ENERGY / Consultant Black and Veach
Scope of Work	The project involved LS Vina Cable as the cable manufacturer and Pfisterer Switzerland AG for cable accessories, supplying 21 GIS (Gas Insulated Switchgear) terminations and 21 oil-immersed sealing ends, with installation scope covering 230kV power cable pulling, GIS sealing end installation, and outdoor oil-immersed sealing end terminations.

EXTRA HIGH VOLTAGE



PROJECT REFERENCE LIST

Project Name:
69kV NAREDCO LA-LO BIOGAS POWER PLANT CONNECTING TO NGCP GRID

Year	2023
Client	AC ENERGY / DELL88
Scope of Work	Supply of 1x2000mm ² XLPE 69kV Power Cable along with the Cable Accessories 12 pcs of Outdoor Sealing End associated with the Link Box and Clamps. The scope also includes the cable terminations of outdoor Sealing End.

EXTRA HIGH VOLTAGE



PROJECT REFERENCE LIST

Project Name:
138KV UGC Power Cable Restoration Connecting Mandawe to Cebu City

Year	2023
Client	NGCP / Hengtong Optic-Electric Co.Ltd.
Scope of Work	The 138kV Underground Cable were damage by DPWH during excavation using backhoe near Mandawi City. The scope is to restore the power such as cable pulling of new cables 40 meters in between the damage point and install two Insulated Joints manufactured by Pfisterer Switzerland, Installation of Joints and Testing and Commissioning Works.

EXTRA HIGH VOLTAGE



PROJECT REFERENCE LIST

Project Name:
115kV MERALCO LIIP PROJECT

Year	2023
Client	115kV MERALCO LIIP PROJECT
Scope of Work	Cable accessories were supplied by Pfisterer Switzerland AG, including 9 pcs of 115kV dry-type outdoor sealing ends (Type ESF) without self-supporting structures, with the scope of work covering supervision of their installation.

EXTRA HIGH VOLTAGE



PROJECT REFERENCE LIST

Project Name:

Supply, Delivery and Installation of 230kV XLPE Cable Accessories for Revenue Metering Unit 1 Project at Masinloc, Zambales, Philippines

Year	2022
Client	SMC Global Power Holdings Corp. - Masinloc Power Partners Co. Ltd.
Scope of Work	<p>Supply of Materials:</p> <ul style="list-style-type: none"> - 230kV 3 pcs GIS Sealing End, Connex 6-S Type - 230kV 3 pcs XFMR Sealing End, Connex 6-S Type <p>Installation Portion:</p> <ul style="list-style-type: none"> - 230kV 3 pcs GIS Sealing End, Connex 6-S Type - 230kV 3 pcs XFMR Sealing End, Connex 6-S Type <p>As-built Installation:</p> <ul style="list-style-type: none"> - 230kV 3 pcs MSA Straight thru Joint (Tyco Electronics supplied by MPPCL) <p>Cable Size: 1x630mm² XLPE Cu Power Cable Cable Accessories: PFISTERER</p>

EXTRA HIGH VOLTAGE



PROJECT REFERENCE LIST

Project Name:

Supply, Delivery and Installation of 230kV XLPE Cable Accessories for Cebu-Negros Panay (CNP) 230kV Backbone Project, Stage 2 (Underground Cable Portion) 2nd Circuit Sp19.CNP2UGC (2NDC).Vt-0420R at NGCP Banilad Substation at Cebu City, Cebu, Philippines

Year	2022
Client	National Grid Corporation of the Philippines / Hengtong Optic Electric Co.,Ltd.
Scope of Work	<p>Supply of Materials:</p> <ul style="list-style-type: none"> - 230kV 8 pcs Outdoor ESS Type Oil Immersed Sealing End (2 set of spares) - 230kV 8 pcs GIS Sealing End, Connex 6-S Type (2 set of spares) <p>Installation Portion:</p> <ul style="list-style-type: none"> - 230kV 6 pcs Outdoor ESS Type Oil Immersed Sealing End - 230kV 6 pcs GIS Sealing End, Connex 6-S Type <p>Cable Size: 1x2500mm² XLPE Enameled Power Cable Cable Accessories: PFISTERER</p>

EXTRA HIGH VOLTAGE



PROJECT REFERENCE LIST

Project Name:

Supply, Delivery and Installation of 138kV XLPE Cable Accessories for NCGP BESS Villanueva Substation Project at Cagayan De Oro City, Cagayan De Oro, Philippines

Year	2022
Client	SMC Global Power Holdings Corp. / Del88 Power Systems Corporation
Scope of Work	Supply of Materials: - 138kV 6 pcs Outdoor ESP Type Oil Immersed Sealing End Installation Portion: - 138kV 6 pcs Outdoor ESP Type Oil Immersed Sealing End Cable Size: 1x800mm ² XLPE Cu Power Cable Cable Accessories: PFISTERER

EXTRA HIGH VOLTAGE



PROJECT REFERENCE LIST

Project Name:
230KV HV METERING – MASINLOC ZAMBALES (PHASE 2)

Year	2022
Client	Hefty Power Systems Corporation
Scope of Work	Supply of 1x630mmw XLPE Power Cable 1000 meters Length associated with 6 Nos. of GIS Sealing End Type Connex 6S and 6 Nos. of Transformer Sealing type Oil Immersed Cable Terminations, 12 Nos. of Outdoor Sealing End associated with cable clamps, Link Boxes, cable clamps etc. The scope includes cable pulling and cable termination of the supply Sealing End.

LOCATION	CLIENT NAME	YEAR	PROJECT NAME & SCOPE OF WORK
Philippines	SMC Global Power Holdings Corp. / Del88 Power Systems Corporation		Supply, Delivery and Installation of 69kV XLPE Cable Accessories for NAREDCO Magapit Substation Project at Lal-lo, Cagayan, Philippines Outdoor Sealing End - 12 pcs (ESP Type; Oil Filled Type)
Philippines	SMC Global Power Holdings Corp. / Energy & Building Applications Technologies Corp.		Supply, Delivery and Installation of 69kV XLPE Cable for NAREDCO Magapit Substation Project at Lal-lo, Cagayan, Philippines 69kV 1x2000mm² XLPE Power Cable – 2100 m
Philippines	SMC Global Power Holdings Corp. / Del88 Power Systems Corporation		Supply, Delivery and Installation of 69kV XLPE Cable Accessories for NGCP Daraga Substation Project at Daraga, Albay, Philippines Outdoor Sealing End - 6 pcs (ESP Type; Oil Filled Type)
Philippines	SMC Global Power Holdings Corp. / Energy & Building Applications Technologies Corp.		Supply, Delivery and Installation of 69kV XLPE Cable for NGCP Daraga Substation Project at Daraga, Albay, Philippines 69kV 1x800mm² XLPE Power Cable – 400 m 450/750V 1x300mm² Cu Cable – 130 m
Philippines	SMC Global Power Holdings Corp. / Del88 Power Systems Corporation		Supply and Delivery of 69kV XLPE Cable Accessories for CEDC SM Clark Area Renovation Project at Angeles, Pampanga, Philippines Outdoor Sealing End - 6 pcs (ESP Type; Oil Filled Type)

LOCATION	CLIENT NAME	YEAR	PROJECT NAME & SCOPE OF WORK
Philippines	Santa Cruz Solar / LS-Vina Cable & System	2022	Installation of 230kV XLPE Cable Accessories for NGCP San Marcelino Substation Project at San Marcelino, Zambales, Philippines Outdoor Sealing End – 21 pcs GIS Sealing End – 21 pcs
Philippines	SMC Global Power Holdings Corp. - Masinloc Power Partners Co. Ltd.	2022	Supply, Delivery and Installation of 230kV XLPE Cable & Accessories for Revenue Metering Unit 1&2 Project at Masinloc, Zambales, Philippines Outdoor Sealing End - 12 pcs (ESS Type; Oil Filled Type) GIS Sealing End - 6 pcs (Connex Size 6-S) Transformer Sealing End - 6 pcs (Connex Size 6-S) 230kV 1x630mm ² XLPE Power Cable – 1050 m
Philippines	Manila Electric Company	2022	Supply, Delivery and Installation of 115kV XLPE Cable Accessories for MERALCO Malinta Substation Project at Valenzuela City, Metro Manila, Philippines GIS Sealing End – 6 pcs (Connex Size 6)
Philippines	National Grid Corporation of the Philippines / Hefty Power Systems Corporation	2022	Cable Fault Location, Repair & Testing Project for NCGP Malaya Substation at Pililia, Rizal, Philippines Cable Fault - 1 pc
Philippines	National Grid Corporation of the Philippines / Hefty Power Systems Corporation	2022	Supply, Delivery and Installation of 230kV XLPE Cable Accessories for NCGP Malaya Substation Project at Pililia, Rizal, Philippines MSA Straight thru Joint – 1 pc

LOCATION	CLIENT NAME	YEAR	PROJECT NAME & SCOPE OF WORK
Philippines	SMC Global Power Holdings Corp. / Energy & Building Applications Technologies Corp.	2022	Cable Fault Location, Repair & Testing for NCGP BESS Villanueva Substation Project at Cagayan De Oro City, Cagayan De Oro, Philippines Cable Fault - 1 pc
Philippines	Manila Electric Company	2022	Supply, Delivery and Installation of 115kV XLPE Cable Accessories for MERALCO Malinta Substation Project at Valenzuela City, Metro Manila, Philippines Outdoor Sealing End – 3 pcs (EST Type; Dry Type)
Philippines	SMC Global Power Holdings Corp. - Masinloc Power Partners Co. Ltd.	2022	Supply, Delivery and Installation of 230kV XLPE Cable Accessories for Revenue Metering Unit 1 Project at Masinloc, Zambales, Philippines GIS Sealing End – 3 pcs (Connex Size 6-S) MSA Straight thru Joint – 3 pcs
Philippines	SMC Global Power Holdings Corp. / Energy & Building Applications Technologies Corp.	2022	Supply, Delivery and Installation of 138kV XLPE Cable Accessories for NCGP BESS Villanueva Substation Project at Cagayan De Oro City, Cagayan De Oro, Philippines Outdoor Sealing End – 6 pcs (ESP Type; Oil Filled Type)
Philippines	National Grid Corporation of the Philippines / Pfisterer Power Connection Systems (Beijing) Co. Ltd.	2022	Supervision for Installation of Connex, pluggable bushing for NGCP General Santos Substation Project at General Santos, South Cotabato, Philippines GIS Sealing End - 12 pcs (Connex, pluggable bushing 6-S) GIS Sealing End – 18 pcs (Connex, pluggable bushing 5-S)

EXTRA HIGH VOLTAGE



PROJECT REFERENCE LIST

Project Name:

Supply, Delivery and Installation of 69kV XLPE Cable Accessories for NGCP BESS San Manuel Substation Project at San Manuel, Pangasinan, Philippines

Year	2021
Client	SMC Global Power Holdings Corp. / Del88 Power Systems Corporation
Scope of Work	Supply of Materials: - 69kV 6 pcs Outdoor ESP Type Oil Immersed Sealing End Installation Portion: - 69kV 6pcs Outdoor ESP Type Oil Immersed Sealing End Cable Size: 1x800mm ² XLPE Cu Power Cable Cable Accessories: PFISTERER

EXTRA HIGH VOLTAGE



PROJECT REFERENCE LIST

Project Name:

Supply, Delivery and Installation of 69kV XLPE Cable Accessories for NGCP BESS Concepcion Substation Project at Concepcion, Tarlac, Philippines

Year	2021
Client	SMC Global Power Holdings Corp. / Del88 Power Systems Corporation
Scope of Work	Supply of Materials: - 69kV 6 pcs Outdoor ESP Type Oil Immersed Sealing End Installation Portion: - 69kV 6 pcs Outdoor ESP Type Oil Immersed Sealing End Cable Size: 1x800mm ² XLPE Cu Power Cable Cable Accessories: PFISTERER

EXTRA HIGH VOLTAGE



PROJECT REFERENCE LIST

Project Name:
NEGROS–Panay 230 kV Interconnection Line 2 Project

Year	2021
Client	National Grid Corporation of Philippines partnership with Hengtong Optics
Scope of Work	Supply and install of 6 pcs of Outdoor Sealing End and 6 pcs GIS Sealing End suitable for 1x2500mm ² XLPE Power Cable, enameled type. Also the cable is embedded with fiber optic connecting to sensing equipment. The scope includes cable termination of supplied Pfisterer Cable Accessories.

EXTRA HIGH VOLTAGE



PROJECT REFERENCE LIST

Project Name:

**69 KV BESS PROJECT CONNECTING TO THE NGCP GRID –
CONCEPTION TARLAC**

Year	2021
Client	SMC Global Power / Fluence Inc
Scope of Work	Supply of 69kV XLPE Power Cables 1x1200mm ² XLPE Aluminum Power Cable, 6 Nos. of Outdoor Sealing End including the installation of Cable Terminations.

EXTRA HIGH VOLTAGE



PROJECT REFERENCE LIST

Project Name:

138kV NEW BESS PROJECT CONNECTING TO NGCP GRID - VILLANUEVA SUBSTATION CAGAYAN DE ORO

Year	2021
Client	SMC Global Power / Fluence Inc
Scope of Work	Supply of 138kV XLPE Power Cables 1x800mm ² XLPE Copper Power Cable, 6 Nos. of Outdoor Sealing End including the installation of Cable Terminations.

LOCATION	CLIENT NAME	YEAR	PROJECT NAME & SCOPE OF WORK
Philippines	National Grid Corporation of the Philippines / Hengtong Optic Electric Co.,Ltd.	2021	Supply, Delivery and Installation of 230kV XLPE Cable Accessories for Cebu-Negros Panay (CNP) 230kV Backbone Project, Stage 2 (Underground Cable Portion) 2nd Circuit Sp19.CNP2UGC (2NDC).Vt-0420R at NGCP Banilad Substation at Cebu City, Cebu, Philippines Outdoor Sealing End – 8 pcs (2 set spares) (ESS Type; Oil Filled Type) GIS Sealing End – 8 pcs (2 set spares) (Connex Size 6-S)
Philippines	Manila Electric Company	2021	Supply and Delivery of 115kV Cable Accessories for MERALCO Malinta Substation Project at Valenzuela City, Metro Manila, Philippines Insulation Part No. 566 507-480 – 12 pcs
Philippines	National Grid Corporation of the Philippines / Hefty Power Systems Corporation	2021	Cable Fault Location, Repair & Testing for NCGP Malaya Substation Project at Pililia, Rizal, Philippines Cable Fault - 5 pcs
Philippines	SMC Global Power Holdings Corp. / Del88 Power Systems Corporation	2021	Supply, Delivery and Installation of 69kV XLPE Cable Accessories for NGCP BESS Concepcion Substation Project at Concepcion, Tarlac, Philippines Outdoor Sealing End – 6 pcs (ESP Type; Oil Filled Type)
Philippines	SMC Global Power Holdings Corp. / Del88 Power Systems Corporation	2021	Supply, Delivery and Installation of 69kV XLPE Cable Accessories for NGCP BESS San Manuel Substation Project at San Manuel, Pangasinan, Philippines Outdoor Sealing End – 6 pcs (ESP Type; Oil Filled Type)

LOCATION	CLIENT NAME	YEAR	PROJECT NAME & SCOPE OF WORK
Philippines	Clark Electric Distribution Corporation / Del88 Power Systems Corporation	2021	Supply, Delivery and Installation of 69kV XLPE Cable Accessories for CEDC Clark Airport Project at Mabalacat, Pampanga, Philippines Outdoor Sealing End – 6 pcs (ESP Type; Oil Filled Type)
Philippines	SMC Global Power Holdings Corp. / Energy & Building Applications Technologies Corp.	2021	Cable Fault Location, Repair & Testing for NGCP BESS Concepcion Substation Project at Concepcion, Tarlac, Philippines Cable Fault - 5 pcs
Philippines	Manila Electric Company	2021	Supply and Delivery of 115kV Cable Accessories for MERALCO Malinta Substation Project at Valenzuela City, Metro Manila, Philippines Insulation Part No. 566 507-480 – 6 pcs
Philippines	Masinloc Power Partner Co. Ltd.	2021	230KV HV METERING – MASINLOC ZAMBALES (PHASE 1) Supply of 1x630mmw XLPE Power Cable 500 meters Length associated with 3 Nos. of GIS Sealing End Type Connex 6S and 3 Nos. of Transformer Sealing type Connex 6S along with female part. The scope includes cable pulling and cable termination of the supply Sealing End.
Philippines	AC Energy INGRID	2021	230KV 150MW Power Plant Malaya Piliia Rizal Supply and Installation of 24 pcs 230kV Outdoor Sealing End, Cable Fault Detection damage by Hefty Power Cable during cable pulling works.

EXTRA HIGH VOLTAGE



PROJECT REFERENCE LIST

Project Name:

Supply, Delivery and Installation of 115kV XLPE Cable Accessories for MERALCO LIIP Substation at Biñan, Laguna, Philippines

Year	2020
Client	MERALCO
Scope of Work	<p>Supply of Materials:</p> <ul style="list-style-type: none"> - 115kV 9 pcs Outdoor EST Type Dry Type Cable Sealing End - FOR TRAINING PURPOSE: 115kV 1 pc Outdoor EST Type Dry Type Cable Sealing End <p>Installation Portion:</p> <ul style="list-style-type: none"> - 115kV 9pcs Outdoor EST Type Dry Type Cable Sealing End <p>Cable Size: 1x300mm² XLPE Cu Power Cable Cable Accessories: PFISTERER</p>

LOCATION	CLIENT NAME	YEAR	PROJECT NAME & SCOPE OF WORK
Philippines	AC Energy Corporation / Hefty Power Systems Corporation	2020	Supply, Delivery and Installation of 230kV XLPE Cable Accessories for NCGP Malaya Substation Project at Pililia, Rizal, Philippines Outdoor Sealing End – 24 pcs (ESP Type; Oil Filled Type)
Philippines	Manila Electric Company	2020	Supply, Delivery and Installation of 115kV XLPE Cable Accessories for MERALCO LIIP Substation at Biñan, Laguna, Philippines Outdoor Sealing End – 10 pcs (1 set spare for training purposes) (EST Type; Dry Type)

EXTRA HIGH VOLTAGE CABLE WORKS

ASIA PACIFIC



EXTRA HIGH VOLTAGE



PROJECT REFERENCE LIST

Project Name:

Cable Fault Location, Repair & Testing for ACS 10 GW Package 2 UGC Buduran – Sedati Project at Surabaya, Indonesia

Year	2022
Client	General Electric
Scope of Work	<ul style="list-style-type: none">- Cable Fault Located – 41 pcs- Cable Fault Repair – 48 pcs- Cable Fault Testing – 48 pcs

EXTRA HIGH VOLTAGE



PROJECT REFERENCE LIST

Project Name:

Installation & Supervision of 132kV Cable Accessories (Pfisterer Termination Kits, Jointing Kits, Link Box and all related joint work) for Green Power Development and Energy Efficiency Improvement Investment Programme (Tranche2) Package 3:Lot A1 Project at Colombo, Sri Lanka

Year	2022
Client	Hyosung Heavy Industries
Scope of Work	Installation Portion: - 132kV 10 pcs MSA Straight thru Joint - 132kV 21 pcs GIS Sealing End, Connex 6-S Type Cable Size: 1x800mm ² XLPE Cu Power Cable Cable Accessories: PFISTERER

EXTRA HIGH VOLTAGE



PROJECT REFERENCE LIST

Project Name:

Installation & Cable Termination Work for Amimbazar Substation PGCB 230kV Project at Dhaka, Bangladesh

Year	2021
Client	Hyosung Heavy Industries
Scope of Work	Installation Portion: - 230kV 22 pcs Sealing End , - Termination of Solid Earthing Link Box Cable Size: 1x2000mm ² XLPE Cu Power Cable Cable Accessories: SUDKABEL

LOCATION	CLIENT NAME	YEAR	PROJECT NAME & SCOPE OF WORK
Indonesia	PT. Grid Solution Indonesia	2022	Cable Fault Location, Repair & Testing for ACS 10 GW Package 2 UGC Buduran – Sedati Project at Surabaya, Indonesia Cable Fault Located – 41 pcs Cable Fault Repaired – 48 pcs
Sri Lanka	Hyosung Heavy Industries	2022	Installation & Supervision of 132kV Cable Accessories (Pfisterer Termination Kits, Jointing Kits, Link Box and all related joint work) for Green Power Development and Energy Efficiency Improvement Investment Programme (Tranche2) Package 3:Lot A1 Project at Colombo, Sri Lank GIS Sealing End – 21 pcs (Connex 6-S Type) MSA Straight thru Joint – 10 pcs
Bangladesh	Hyosung Heavy Industries	2021	Installation & Cable Termination Work for Amimbazar Substation PGCB 230kV Project at Dhaka, Bangladesh Outdoor Sealing End – 22 pcs
Indonesia	PT. Grid Solution Indonesia	2019	JAVA - BALI Acceleration Project Associated with 10000MW Steam Coal Power Plant Project - 150kV GIS and UG Cables for Jakarta and West Java. Installation of Cable Accessories suitable for 1x1200mm XLPE Power Cable Outdoor Sealing End – 6 Nos. GIS Sealing End – 6 Nos. MSA Straight-thru Joint – 96 Nos.
Indonesia	PT Supreme Cable Manufacturing & Commerce Tbk	2017	150kV Light Rail Transit (LRT) Palembang Project for South East Asian (SEA) Games MSA Straight-thru Joint – 36 pcs



EXTRA HIGH VOLTAGE CABLE WORKS

AFRICA



EXTRA HIGH VOLTAGE



PROJECT REFERENCE LIST

Project Name:

Burial Works of 60kV Lines Crossing the City of Berkane Province of Berkane

Year	2022
Client	SERF
Scope of Work	Installation Portion: - 60kV 6 pcs Outdoor ESP Type Oil Immersed Cable Sealing End - 60kV 9 pcs MSA Straight thru Joint Cable Size: 1x2500mm ² Cu XLPE Power Cable Cable Accessories: PFISTERER

EXTRA HIGH VOLTAGE



PROJECT REFERENCE LIST

Project Name:

**Installation of High Voltage Cable Accessories and Testing
60kV Agadir Project at Morocco**

Year	2020
Client	DOKO
Scope of Work	Installation Portion: - 60kV 24 pcs Outdoor ESP Type Oil Immersed Cable Sealing End - 60kV 24 pcs of MSA Straight thru Joint Cable Size: 1x1000mm ² XLPE Power Cable Cable Accessories: PFISTERER

EXTRA HIGH VOLTAGE



PROJECT REFERENCE LIST

Project Name:
Installation of High Voltage Cable Accessories and Testing
60kV Dhakla Project
at Morocco

Year	2020
Client	Larsen and Toubro
Scope of Work	Installation Portion: - 60kV 16 pcs of Outdoor ESP Oil Immersed Cable Sealing End - 60kV 160 pcs MSA Straight thru Joint Cable Size: 1x1200mm ² Cu XLPE Power cable Cable Accessories: PFISTERER

LOCATION	CLIENT NAME	YEAR	PROJECT NAME & SCOPE OF WORK
Morocco	Societe Electro Radio Froid	2022	Burial Works of 60kV Lines Crossing the City of Berkane Province of Berkane at Morocco Outdoor Sealing End – 6 pcs (ESP Type, Oil Filled Type) MSA Straight thru Joint – 9 pcs
Morocco	Societe STE DOKO SH.P.K SARL	2020	Installation of High Voltage Cable Accessories and Testing 60kV Agadir Project at Morocco Outdoor Sealing End – 24 pcs (ESP Type, Oil Filled Type) MSA Insulated Joint – 24 pcs
Morocco	Larsen and Toubro Saudi Arabia	2020	Installation of High Voltage Cable Accessories and Testing 60kV Dhakla Project at Morocco Outdoor Sealing End – 3 pcs (ESP Type, Oil Filled Type) MSA Insulated Joint – 13 pcs

EXTRA HIGH VOLTAGE CABLE WORKS

MIDDLE EAST





LOCATION	CLIENT NAME	YEAR	PROJECT NAME & SCOPE OF WORK
Saudi Arabia	PFISTERER Limited Company	2025	Reinforcement of 132 KV Network of Baqaa S/S 8911, in Hail area PE299 SUPERVISORING THE INSTALLOIN OF PFISTERER ACCESSORES.
Saudi Arabia	PFISTERER Limited Company	2025	Saudi Rabigh Phase IV Seawater Desalination EPC Project SUPERVISORING THE INSTALLOIN OF PFISTERER ACCESSORES.
Saudi Arabia	Riyadh Cables Group Company	2025	Connection of Al Narjis SS 8218 with 132kV Network Riyadh City Installation of 6 GIS cable sealing ends, 9 insulated joints, and termination of 2 link boxes for 132kV XLPE power cables, manufactured by Pfisterer Ixosil.
Saudi Arabia	PFISTERER Limited Company	2025	Rehabilitation of Misfela / Mansour Projects (2023 0690) Installation of 15 GIS cable sealing ends, 12 transformer cable sealing ends, and termination of 8 link boxes for 110kV XLPE power cables, manufactured by Pfisterer Ixosil.
Saudi Arabia	PFISTERER Limited Company	2025	Construction of 132/33kV Wadi Safer SS Project Installation of 12 HV-Connex (male and female) GIS cable sealing ends and termination of 4 link boxes for 132kV XLPE power cables, manufactured by Pfisterer Ixosil.
Saudi Arabia	PFISTERER Limited Company	2024	Construction of ABHOUR (ABH) 380/110/13.8kV BSP portion III Installation of 9 HV-Connex (male and female) GIS cable sealing ends, 9 transformer cable sealing ends, and termination of 6 link boxes for 110kV XLPE power cables, manufactured by Pfisterer Ixosil.

LOCATION	CLIENT NAME	YEAR	PROJECT NAME & SCOPE OF WORK
Saudi Arabia	Subsea Seven Saudi Co Ltd.	2024	<p>Installation of 69kV Cables Accessories at MIP PKG-02 - Offshore Oil Facility</p> <p>Installation and repair works of 69kV cable sealing ends, installation of 96-core fiber cables, and termination of link boxes, all with components manufactured by Pfisterer Ixosil.</p>
Saudi Arabia	Larsen and Toubro	2024	<p>Installation of 115/230kV Cables Accessories at Jafurah Gas Compression Plants (GCPs) and Produced Water Injection Station (PWIS) (Package-1)</p> <p>The scope includes the installation of 12 GIS (SF6/XLPE) and 12 outdoor sealing end terminations suitable for 115kV, 1C 1x400mm² CU/XLPE/LEAD/HDPE power cables, and 36 GIS and 36 outdoor sealing end terminations for 230kV, 1C 1x630mm² CU/XLPE/LEAD/HDPE power cables, all manufactured by Pfisterer Ixosil. Additionally, 16 sealing end terminations for 13.8kV, 1C 1x240mm² CU/XLPE/LEAD/HDPE power cables (manufacturer: Raychem) and 56 link boxes were installed.</p>
Saudi Arabia	Riyadh Cables Group Company	2024	<p>Network Reinforcement of A New 110/13.8kV U/G Cables (Hamdaniyah) & Its 110kV Interconnection in Jeddah Under Network Reinforcement 110/13.8kV S/S.</p> <p>Installation of 102 insulated joints and 12 GIS (SF6/XLPE) sealing end terminations suitable for 110kV CU/XLPE/LEAD/HDPE power cables, along with 28 link boxes, all manufactured by Taihan.</p>
Saudi Arabia	Larsen and Toubro	2024	<p>Installation of 230kV Cables Accessories at Construction of One (1) D/C OHTL LILO between New Afif BSP # 9081 and 9006 / 9037 BSP.</p> <p>Installation of 12 GIS and 12 outdoor (SF6/XLPE) sealing end terminations suitable for 132kV CU/XLPE/LEAD/HDPE power cables, along with 8 link boxes, all manufactured by Pfisterer Ixosil. Scope also includes high-voltage testing of 132kV power cables (4 circuits), 132kV OHTL (2 circuits), 380kV OHTL (2 circuits), and testing of 12 surge arresters.</p>

LOCATION	CLIENT NAME	YEAR	PROJECT NAME & SCOPE OF WORK
Saudi Arabia	LS Buildwin	2024	<p>Installation of 230kV Cables Accessories at SEC-EOA CN#44000174043 Construction of 380/230kV Al Jafurah Project</p> <p>Installation of 18 GIS (SF6/XLPE) sealing end terminations suitable for 230kV, 2500sqmm CU/XLPE/LEAD/HDPE power cables, manufactured by LS Cables & System.</p>
Saudi Arabia	AI TOUKHI COMPANY FOR INDUSTRY, TRADING & CONTRACTING	2024	<p>Installation of 132kV Cables Accessories at CONSTRUCTION OF KHAMIS MUSHAYT 380/132/13.8kV</p> <p>Installation of 36 transformer sealing ends, 60 GIS (SF6/XLPE) sealing end terminations, and 24 outdoor terminations suitable for 132kV CU/XLPE/LEAD/HDPE power cables, all manufactured by NKT.</p>
Saudi Arabia	Mohammed Al-Ojaimi Contracting Company	2024	<p>Installation of 115kV Cables Accessories at 115kV Jubail Near Berri Gas Plant Project</p> <p>Installation of 6 outdoor terminations, 12 GIS terminations, and 6 transformer terminations for 115kV, 1C 1x630mm² CU/XLPE/LEAD/HDPE power cables (Pfisterer Ixosil), along with 8 link boxes.</p>
Saudi Arabia	Alfanar Company	2024	<p>Installation of 230kV Cables Accessories at Construction of 380/230KV JUBAIL SWCC BSP (JSWCC)</p> <p>Installation of 12 GIS (SF6/XLPE) sealing end terminations for 230kV, 1C 1x2500mm² CU/XLPE/HDPE power cables and 3 GIS (SF6/XLPE) sealing end terminations for 230kV, 1C 1x630mm² CU/XLPE/HDPE power cables, manufactured by LS Cables & System.</p>

LOCATION	CLIENT NAME	YEAR	PROJECT NAME & SCOPE OF WORK
Saudi Arabia	Jeddah Cables Company	2023	<p>Installation of 230kV Cables Accessories at MIP-12 Utility, Flare And Piperack for Tanajib Gas Plant Project</p> <p>Installation of 78 outdoor terminations, 84 GIS (SF6/XLPE) sealing end terminations (78 for 630mm² and 6 for 2500mm²), and 12 insulated joints suitable for 230kV CU/XLPE/LEAD/HDPE power cables, all manufactured by LS Cables & System Ltd.</p>
Saudi Arabia	Jeddah Cables Company	2023	<p>Installation of 230kV Cables Accessories at MIP PKG06 – ONSHORE OIL</p> <p>Installation of 54 outdoor terminations, 54 GIS (SF6/XLPE) sealing end terminations for 230kV, 1C 1x630mm² CU/XLPE/LEAD/HDPE power cables, and 12 insulated joints for 230kV, 1C 1x2000mm² CU/XLPE/LEAD/HDPE power cables, all manufactured by LS Cable & System Ltd.</p>
Saudi Arabia	Riyadh Cables Group Company	2023	<p>Installation of 230kV Cables Accessories at 230kV MIP1 GOSP 4 Project</p> <p>Installation of 12 GIS (SF6/XLPE) sealing end terminations and 12 transformer sealing end terminations for 69kV, 1C 1x800mm² CU/XLPE/LEAD/HDPE power cables, and 30 GIS (SF6/XLPE) sealing end terminations and 30 transformer sealing end terminations for 230kV, 1C 1x630mm² CU/XLPE/LEAD/HDPE power cables, all manufactured by Pfisterer Ixosil, along with the installation of 28 link boxes.</p>
Saudi Arabia	Mohammed Al-Ojaimi Contracting Company	2023	<p>Installation of 115/69kV Cables Accessories at Upgrade SS 6 & 40 Power Supply Source Substations. Dharan Project.</p> <p>Installation of 12 transformer and 12 GIS sealing end terminations for 115kV CU/XLPE/LEAD/HDPE power cables (Pfisterer Ixosil), 12 sealing end terminations for 69kV power cables (Raychem), and 12 link boxes.</p>

LOCATION	CLIENT NAME	YEAR	PROJECT NAME & SCOPE OF WORK
Saudi Arabia	NATIONAL POWER CONSTRUCTION CORPORATION LIMITED	2023	<p>Installation of 110kV Cables Accessories at 110/13.8kV Al Fath SS to Looping Points A,B,C,D New Al-Fath 110/13.8kV Substation</p> <p>Installation of 9 insulated joints for 110kV, 1C 1x1200mm² CU/XLPE/LEAD/HDPE power cables (Pfisterer Ixosil), 3 link boxes, and sheath repair for 2 cables.</p>
Saudi Arabia	Larsen and Toubro Saudi	2023	<p>Installation of 69/4.16kV Cables Accessories at 69kV Shedgum GOSP - 1 & Aindar GOSP - 3</p> <p>Installation of 12 cable terminations for 69kV 500sqmm and 4 cable terminations for 4.16kV power cables (Raychem), along with 4 link boxes.</p>
Saudi Arabia	Al Babtain Contracting Company	2023	<p>Installation of 33kV Cables Accessories at 33kV Dammam Plugin Termination</p> <p>Installation of 45 terminations for 33kV 1000sqmm cables, 9 Connex size 3 connectors with cable accessories for 33kV 630sqmm power cables, and 2 Connex size 3 connectors with cable accessories for 33kV 3xC 300sqmm power cables, all manufactured by Pfisterer Ixosil.</p>

EXTRA HIGH VOLTAGE



PROJECT REFERENCE LIST

Project Name:
Cable Termination Work for KHPR D2 132kV Project at Kuwait, Middle East

Year	2022
Client	NKT GmbH
Scope of Work	Installation Portion: - 132kV 100 pcs of GIS Cable Sealing End, KSEV/SEV Type Cable Size: 1x240mm ² ; 1x800mm ² ; 1x1000mm ² Cu XLPE Power Cable Cable Accessories: NKT

EXTRA HIGH VOLTAGE



PROJECT REFERENCE LIST

Project Name:

Construction of Three New 132kV/11kV Substations and its Related 132kV Overhead Power Lines in SEK 132kV Cable Termination Works in Um Al Hayman Substation at Kuwait, Middle East

Year	2022
Client	Larsen and Toubro
Scope of Work	Installation Portion: - 132kV 12 pcs GIS Cable Sealing End, Connex 6-S Type - 132kV 12 pcs ESP Type Outdoor Oil Immersed Cable Sealing End Cable Size: 1x800mm ² Cu XLPE Power Cable Cable Accessories: PFISTERER

LOCATION	CLIENT NAME	YEAR	PROJECT NAME & SCOPE OF WORK
Saudi Arabia	LS Buildwin Ltd.	TBA	Cable Jointing & Termination Work for SAU Aramco/HDEC/JCC MIP-06 230kV Project at Saudi Arabia Outdoor Sealing End – 54 pcs GIS Sealing End – 54 pcs MSA Straight Thru Joint – 12 pcs
Saudi Arabia	NKT Middle East DMCC	2022	Cable Termination Work for Thihama Substation 132kV Project at Uthmaniya, Saudi Arabia GIS Sealing End – 3 pcs Transformer Sealing End – 3 pcs
Saudi Arabia	LS Buildwin Ltd.	2022	Cable Jointing & Termination Work for SAU SWCC/Sepco 3 Jubail II 230kV Project at Jubail, Saudi Arabia Outdoor Sealing End – 3 pcs GIS Sealing End – 12 pcs
Saudi Arabia	Jeddah Cables Company	2022	Cable Jointing Work Red Sea Utility Assets and Infrastructure 110kV Project at Umluj, Saudi Arabia Sheath Separation Joints – 291 pcs
Kuwait	NKT Middle East DMCC	2022	Cable Termination Work for KHPR D2 132kV Project at Kuwait, Middle East GIS / Transformer Sealing End – 100 pcs (KSEV/SEV Type)
Saudi Arabia	NKT Middle East DMCC	2022	Cable Termination Work for Rabigh Substation 132kV Project at Rabigh, Saudi Arabia GIS Sealing End – 3 pcs
Saudi Arabia	October Contracting Company	2022	Cable Jointing & Termination Work for Unayza Substation 132kV Project at Unayza, Al Qassim, Saudi Arabia GIS Sealing End – 12 pcs MSA Straight Thru Joint – 84 pcs
Kuwait	Larsen and Toubro Kuwait	2022	Construction of Three New 132kV/11kV Substations and its Related 132kV Overhead Power Lines in SEK 132kV Cable Termination Works in Um Al Hayman Substation at Kuwait, Middle East Outdoor Sealing End – 12 pcs (ESP Type, Oil Filled Type) GIS Sealing End – 12 pcs (Connex 6-S Type)

EXTRA HIGH VOLTAGE



PROJECT REFERENCE LIST

Project Name:

Hawiyah Unayzah Gas Reservoir Storage (HUGRS) Project, Installation of GIS and Outdoor Sealing End Suitable for 1x630mm XLPE Power Cable at Saudi Arabia

Year	2021
Client	LS Cables Korea
Scope of Work	Installation Portion: - 230kV 78 pcs of GIS Cable Sealing End, Connex Type - 230kV 78 pcs Outdoor Oil Immersed Cable Sealing End Cable Size: 1x630mm ² Cu XLPE Power Cable Cable Accessories: LS Cable

LOCATION	CLIENT NAME	YEAR	PROJECT NAME & SCOPE OF WORK
Saudi Arabia	NKT Middle East DMCC	2021	Cable Termination Work for JEC & Abu Qaeed 132kV Project Outdoor Sealing End – 12 pcs GIS Sealing End – 18 pcs
Saudi Arabia	Alfanar Construction	2021	Hawiyah Unayzah Gas Reservoir Storage (HUGRS) Project, Installation of GIS and Outdoor Sealing End Suitable for 1x630mm XLPE Power Cable at Saudi Arabia GIS Sealing End – 12 pcs
Saudi Arabia	LS Buildwin Ltd.	2021	Hawiyah Unayzah Gas Reservoir Storage (HUGRS) Project, Installation of GIS and Outdoor Sealing End Suitable for 1x630mm XLPE Power Cable at Saudi Arabia Outdoor Sealing End – 78 pcs GIS Sealing End – 78 pcs
Saudi Arabia	LS Buildwin Ltd.	2021	Cable Jointing & Termination Work for SAU Hawiyah 230kV Project at Saudi Arabia GIS Sealing End – 3 pcs Transformer Sealing End – 3 pcs MSA Insulated Joint – 6 pcs
Saudi Arabia	LS Buildwin Ltd.	2021	Cable Jointing & Termination Work for SAU Jeddah Network 380kV Project at Saudi Arabia GIS Sealing End – 12 pcs MSA Insulated Joint – 6 pcs
Saudi Arabia	NKT Middle East DMCC	2020	Cable Termination Work for Sabya West Substation 132kV Project at Saudi Arabia Outdoor Sealing End – 15 pcs GIS Sealing End – 15 pcs
Saudi Arabia	NKT Middle East DMCC	2020	Cable Termination Work for Jizan 2 Substation 132kV Project at Saudi Arabia Outdoor Sealing End – 9 pcs GIS Sealing End – 9 pcs

LOCATION	CLIENT NAME	YEAR	PROJECT NAME & SCOPE OF WORK
Saudi Arabia	NKT Middle East DMCC	2020	Cable Termination Work for Haredah Substation 132kV Project at Saudi Arabia Outdoor Sealing End – 12 pcs GIS Sealing End – 12 pcs
Saudi Arabia	NKT Middle East DMCC	2020	Cable Termination Work for Construction of Khamis Al Bahr Substation 132kV Project at Saudi Arabia Outdoor Sealing End – 6 pcs GIS Sealing End – 6 pcs
Saudi Arabia	NKT Middle East DMCC	2019	Cable Termination Work for Construction of Wadi Ibn Hashbal Substation 132kV Project at Saudi Arabia Outdoor Sealing End – 12 pcs GIS Sealing End – 12 pcs
Saudi Arabia	Saudi Services for Electro Mechanic Works Co.	2019	Cable Jointing & Termination Work for Construction of KFIP Substation 132kV Project at Saudi Arabia Outdoor Sealing End – 3 pcs GIS Sealing End – 21 pcs MSA Insulated Joint – 75 pcs
Saudi Arabia	Saudi Services for Electro Mechanic Works Co.	2018	Cable Jointing & Termination Work for Construction of South East Dammam Substation 115kV Project at Saudi Arabia GIS Sealing End – 12 pcs MSA Insulated Joint – 66 pcs
Saudi Arabia	Al Babtain Contracting Co.	2017	Cable Jointing & Termination Work for Construction of Fadhili Industrial Support Facilities 132kV Project at Saudi Arabia Outdoor Sealing End – 6 pcs MSA Insulated Joint – 30 pcs
Saudi Arabia	Larsen and Toubro Saudi Arabia	2017	Cable Jointing & Termination Work for Construction of Al Artawyah Substation 132kV Project Outdoor Sealing End – 12 pcs GIS Sealing End – 12 pcs MSA Insulated Joint – 6 pcs

LOCATION	CLIENT NAME	YEAR	PROJECT NAME & SCOPE OF WORK
Saudi Arabia	Larsen and Toubro Saudi Arabia	2017	Cable Jointing & Termination Work for New Zulfi Substation 132kV Project at Saudi Arabia Outdoor Sealing End – 30 pcs GIS Sealing End – 30 pcs MSA Insulated Joint – 84 pcs
Saudi Arabia	Larsen and Toubro Saudi Arabia	2017	Cable Jointing Work for New Ha'il Substation 132kV Project at Saudi Arabia MSA Insulated Joint- 18 pcs
Saudi Arabia	Larsen and Toubro Saudi Arabia	2017	Cable Joint & Termination Work for Arar Area Substation 132kV Project at Saudi Arabia GIS Sealing End – 12 pcs MSA Insulated Joint – 30 pcs
Saudi Arabia	Al Haider Trading & Contracting Company	2017	115kV Al Ula Substation Project GIS Sealing End – 9 pcs MSA Insulated Joint – 18 pcs
Saudi Arabia	Larsen & Toubro Saudi Arabia	2016	132kV Al Qaeda Substation Project Outdoor Sealing End – 12 pcs GIS Sealing End – 12 pcs MSA Insulated Joint – 12 pcs
Saudi Arabia	Larsen & Toubro Saudi Arabia	2016	132kV Qasim Area Project Outdoor Sealing End – 12 pcs GIS Sealing End – 12 pcs MSA Insulated Joint – 12 pcs
Saudi Arabia	Al Haider Trading & Contracting Company	2016	132kV Al Kharj Substation Project Outdoor Sealing End – 12 pcs GIS Sealing End – 12 pcs
Saudi Arabia	Larsen & Toubro Saudi Arabia	2016	132kV Al Russ Substation Project Outdoor Sealing End – 12 pcs GIS Sealing End – 12 pcs MSA Insulated Joint – 42 pcs

LOCATION	CLIENT NAME	YEAR	PROJECT NAME & SCOPE OF WORK
Saudi Arabia	Larsen & Toubro Saudi Arabia	2016	132kV Hail Industrial City Substation Project Outdoor Sealing End – 6 pcs GIS Sealing End – 6 pcs MSA Insulated Joint – 90 pcs
Saudi Arabia	Larsen & Toubro Saudi Arabia	2016	132kV Wadi Al Dawaser Project Outdoor Sealing End – 12 pcs GIS Sealing End – 12 pcs
Saudi Arabia	Hadi Haider Company	2016	115kV Mardumah Substation Project GIS Sealing End – 12 pcs MSA Insulated Joint – 72 pcs
Saudi Arabia	Hadi Haider Company	2016	115kV Jubail Commercial Port Substation Project Outdoor Sealing End – 18 pcs GIS Sealing End – 12 pcs MSA Insulated Joint – 78 pcs
Saudi Arabia	Larsen & Toubro Saudi Arabia	2016	132kV Buraydah Substation Project GIS Sealing End – 12 pcs MSA Insulated Joint – 75 pcs
Saudi Arabia	Advance Energy General Trading & Contracting Company	2016	110kV Al Zahra Substation Project Transformer Sealing End – 15 pcs
Saudi Arabia	Al Haider Trading & Contracting Co.	2015	115kV Doha BSP Integration Project GIS Sealing End – 12 pcs MSA Insulated Joint – 120 pcs
Saudi Arabia	Al Haider Trading & Contracting Co.	2015	115kV Rafeah-2 Substation Project GIS Sealing End - 12 pcs MSA Insulated Joint – 192 pcs

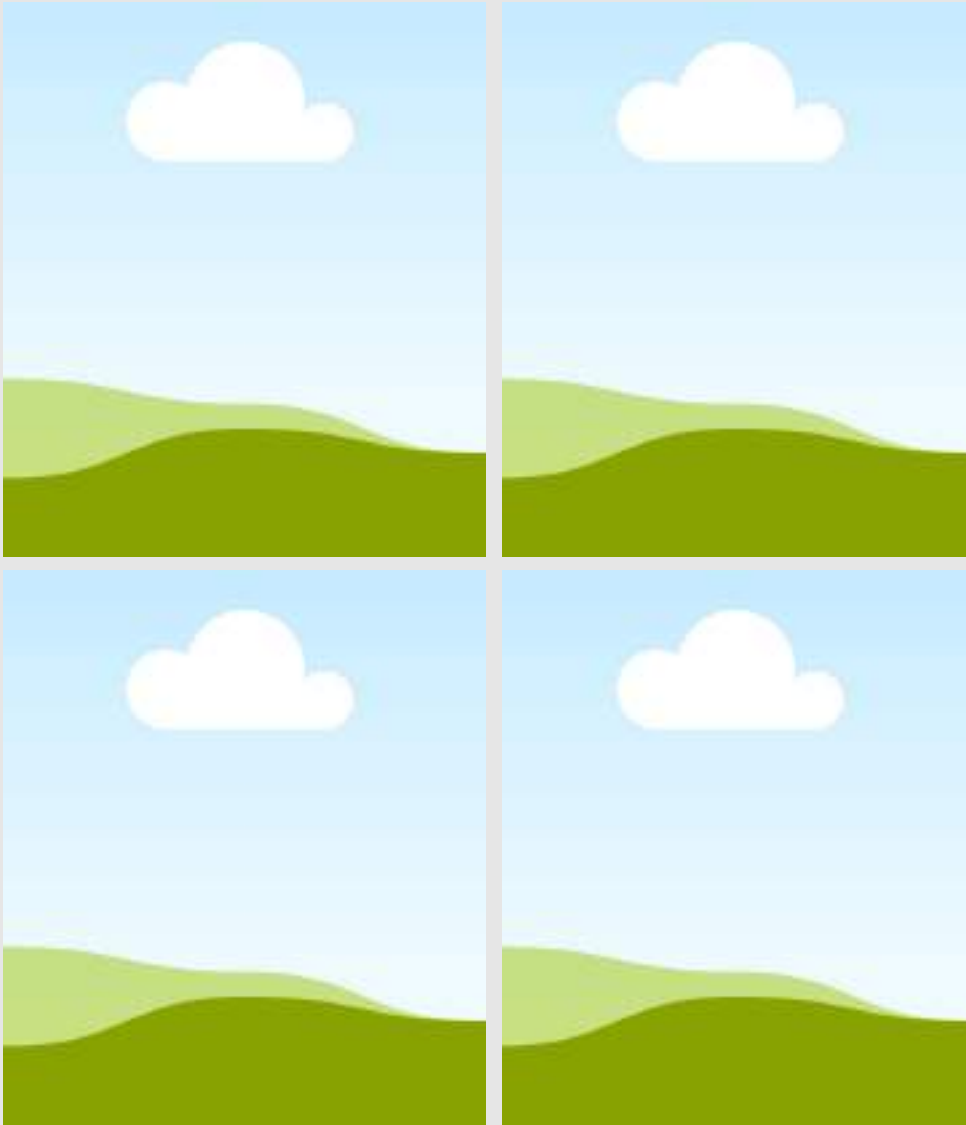
LOCATION	CLIENT NAME	YEAR	PROJECT NAME & SCOPE OF WORK
Saudi Arabia	Al Babbain Contracting Co.	2015	132kV Waad Al Shamal Project Outdoor Sealing End – 6 pcs GIS Sealing End – 6 pcs MSA Insulated Joint – 60 pcs
Saudi Arabia	Mohammed Al Ojaimi Contracting Est.	2015	115kV UG Conversion of Jawatha / Al Masoudi Project MSA Straight Thru Joint – 12 pcs
Saudi Arabia	Hadi Haider Company	2015	115kV UG Qatif BSP to New Qatif Substation Project MSA Straight Thru Joint – 12 pcs
Saudi Arabia	DELTA Contracting Ltd.	2014	115kV UG King Abdul Aziz Port (KAAP) Project MSA Straight Thru Joint – 174 pcs

EXTRA HIGH VOLTAGE CABLE WORKS

EUROPE



EXTRA HIGH VOLTAGE



PROJECT REFERENCE LIST

Project Name:

Year	2025
Client	
Scope of Work	



SUBSTATION PROJECTS

PHILIPPINES



SUBSTATION PROJECTS



PROJECT REFERENCE LIST

Project Name:

Construction of 40MW Service Entrance Concrete Pedestal Structure for NGCP BESS Lumban Substation Project at Lumban, Laguna, Philippines

Year	2022
Client	SMC / Siemens Energy
Scope of Work	<p>Construction of 40MW Service Entrance Concrete Pedestal:</p> <ul style="list-style-type: none"> - Construction of DU Pedestal - Cable Trenching - Pipe Laying - Medium Voltage Cable supply - Medium Voltage Cable Pulling - Medium Voltage Cable Testing - Manhole Construction

SUBSTATION PROJECTS



PROJECT REFERENCE LIST

Project Name:

Construction of 40MW Service Entrance Concrete Pedestal Structure for NGCP BESS Gamu Substation Project at Gamu, Isabela, Philippines

Year	2021
Client	SMC / Siemens Energy
Scope of Work	<p>Construction of 40MW Service Entrance Concrete Pedestal:</p> <ul style="list-style-type: none"> - Construction of DU Pedestal - Cable Trenching - Pipe Laying - Medium Voltage Cable Supply - Medium Voltage Cable Pulling - Medium Voltage Cable Testing - Manhole Construction

LOCATION	CLIENT NAME	YEAR	PROJECT NAME & SCOPE OF WORK
Philippines	SMC Global Power Holdings Corp. / Siemens Energy Inc.	2022	<p>Construction of 40MW Service Entrance Concrete Pedestal Structure for NGCP BESS Mexico Substation Project at Mexico, Pampanga, Philippines</p> <p>Construction of 40MW Service Entrance Concrete Pedestal:</p> <ul style="list-style-type: none"> - Construction of DU Pedestal - Cable Trenching - Pipe Laying - Medium Voltage Cable Supply - Medium Voltage Cable Pulling - Medium Voltage Cable Testing - Manhole Construction
Philippines	SMC Global Power Holdings Corp. / Siemens Energy Inc.	2022	<p>Construction of 40MW Service Entrance Concrete Pedestal Structure for NGCP BESS Lumban Substation Project at Lumban, Laguna, Philippines</p>
Philippines	SMC Global Power Holdings Corp. / Siemens Energy Inc.	2022	<p>Construction of 40MW Service Entrance Concrete Pedestal Structure for NGCP BESS Mexico Substation Project at Mexico, Pampanga, Philippines</p>

SUBSTATION PROJECTS



PROJECT REFERENCE LIST

Project Name:

Construction of 40MW Service Entrance Concrete Pedestal Structure for NGCP BESS Magapit Substation Project at Lal-lo, Cagayan, Philippines

Year	2021
Client	SMC / Siemens Energy
Scope of Work	<p>Construction of 40MW Service Entrance Concrete Pedestal:</p> <ul style="list-style-type: none"> - Construction of DU Pedestal - Cable Trenching - Pipe Laying - Medium Voltage Cable Supply - Medium Voltage Cable Pulling - Medium Voltage Cable Testing - Manhole Construction

SUBSTATION PROJECTS



PROJECT REFERENCE LIST

Project Name:

Full Construction of 230kV NGCP BESS Concepcion Substation at Concepcion, Tarlac, Philippines

Year	2021
Client	SMC / Siemens Energy
Scope of Work	Substation Construction: - Full Substation Construction - Electrical and Electromechanical Works

SUBSTATION PROJECTS



San Manuel Substation
Philippines
Electrical Works
Cable Pulling,
Termination and Tooling



PROJECT REFERENCE LIST

Project Name:

Full Construction of 230kV NGCP BESS San Manuel Substation at San Manuel, Pangasinan, Philippines

Year	2021
Client	SMC / Siemens Energy
Scope of Work	Substation Construction: - Full Substation Construction - Electrical and Electromechanical Works

LOCATION	CLIENT NAME	YEAR	PROJECT NAME & SCOPE OF WORK
Philippines	SMC Global Power Holdings Corp. / Siemens Energy Inc.	2021	Construction of 40MW Service Entrance Concrete Pedestal Structure for NGCP BESS Gamu Substation Project at Gamu, Isabela, Philippines
Philippines	SMC Global Power Holdings Corp. / Siemens Energy Inc.	2021	Construction of 40MW Service Entrance Concrete Pedestal Structure for NGCP BESS Magapit Substation Project at Lal-lo, Cagayan, Philippines
Philippines	SMC Global Power Holdings Corp. / Siemens Energy Inc.	2021	Full Construction of 230kV NGCP BESS Concepcion Substation at Concepcion, Tarlac, Philippines
Philippines	SMC Global Power Holdings Corp. / Siemens Energy Inc.	2021	Full Construction of 230kV NGCP BESS San Manuel Substation at San Manuel, Pangasinan, Philippines
Philippines	PT. Grid Solution Indonesia	2019	Full Construction of 230kV NGCP BESS San Esteban Substation at San Esteban, Ilocos Sur, Philippines
Philippines	PT. Grid Solution Indonesia	2019	Full Construction of 230kV NGCP BESS Botolan Substation at Botolan, Zambales, Philippines
Philippines	PT. Grid Solution Indonesia	2019	Full Construction of 230kV NGCP BESS Labo Substation at Labo, Camarines Norte, Philippines

LOCATION	CLIENT NAME	YEAR	PROJECT NAME & SCOPE OF WORK
Philippines	PT. Grid Solution Indonesia	2021	Full Construction of 230kV NGCP BESS Binan Substation at Binan, Laguna, Philippines
Philippines	PT. Grid Solution Indonesia	2021	Full Construction of 230kV NGCP BESS Dasmarinas Substation at Dasmarinas, Cavite, Philippines
Philippines	PT. Grid Solution Indonesia	2021	Full Construction of 230kV NGCP BESS Mexico Substation at Mexico, Pampanga, Philippines